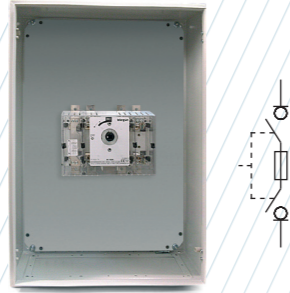
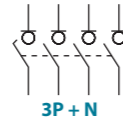


# CIF22 Metal enclosed switch fuses IP65 3P - 3P+N

**Size 2**  
**A** 250 | 400



	CODE-250A	CODE-400A
3P	CIF22C02503PSD1	CIF22C04003PSD2
3P+N	CIF22C02503NSD1	CIF22C04003NSD2



## Accessories

**External handle** included  
IP65

**Emergency external handle** under request  
IP65

**Auxiliary contacts**  
 1NO+1NC CODE D5LAU01  
 2NO+2NC CODE D5LAU02  
 Ie = 16 A (resistive loads)  
 4 A (inductive loads) at 250 Vac.

## Terminal shrouds



INPUT 3P	OUTPUT 3P	INPUT/OUTPUT 4P
DM2CU21	DM2CU22	DM2CU23

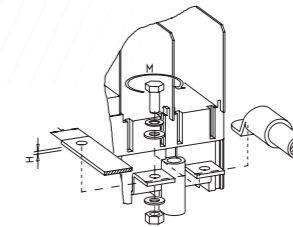
(1 kit for input or output)

## Safety key lock device



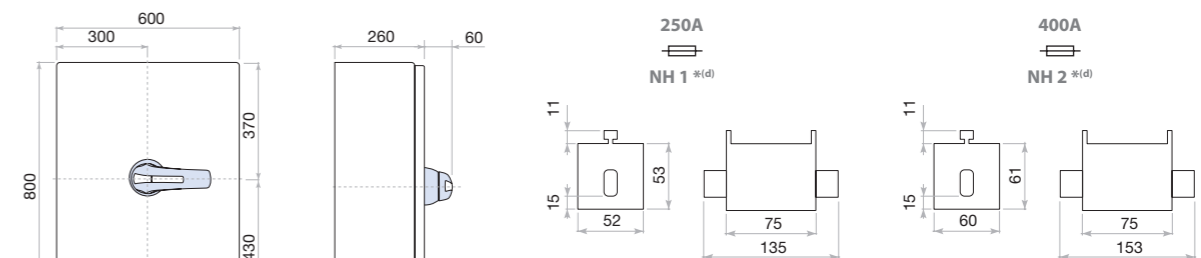
Simple CODE DS-CB21  
 Double CODE DS-CF21

For external handle, lock the handle by means of a key in position "OFF" (under request, in "ON"), the key can only be removed with the handle locked



S max (Cu)	H max (Cu)	L max (Cu)	M
mm <sup>2</sup>	mm	mm	Nxm
240	6	40	M10 24

## Dimensions (mm)



Fuse max dimensions

\*<sup>(d)</sup> Other fuses type, may be required changing the dimensions, please consult

## Technical information



According to IEC 60947-3  
 IEC 61439-2

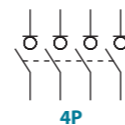
			250	400
Fuses	NH/DIN		1	2
Rated thermal current in enclosure 40°C	I <sub>the</sub>	A	250	400
Rated insulation voltage	U <sub>i</sub>	V	1000	1000
Rated impulse withstand voltage	U <sub>imp</sub>	kV	12	12
Power dissipation in fuse links * <sup>(1)</sup>	NH/DIN	W	18,7	30
AC rated operational current * <sup>(2)</sup>	I <sub>e</sub>	A	250	400
(Rated frequency 50/60 Hz)	U <sub>e</sub> 400 V AC21A	A	250	400
	U <sub>e</sub> 400 V AC22A	A	250	400
	U <sub>e</sub> 400 V AC23A	A	250	400

\*<sup>(1)</sup> Power dissipation values of fuse - links used in type tests. Please consult for fuse - links with higher power dissipation

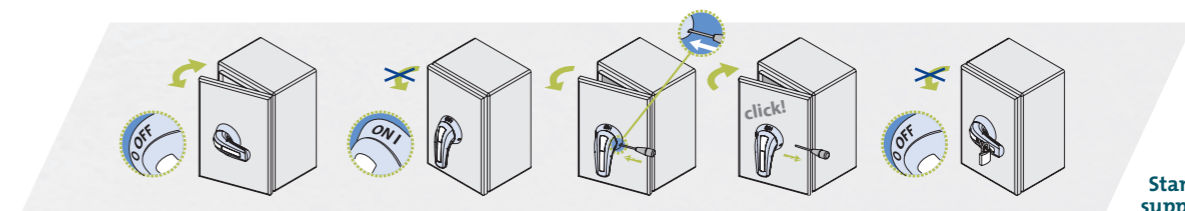
\*<sup>(2)</sup> Other voltages and / or utilization categories. Please consult

\*<sup>(3)</sup> With a protective device limiting the cut - off current and the joule integral to the indicated values

			250	400
Rated breaking capacity	400 V; cos φ = 0,35÷0,45	A	2000	3200
Rated making capacity	400 V; cos φ = 0,45	A	2500	4000
<b>Conditional short - circuit current</b>				
Rated conditional short-circuit current * <sup>(3)</sup>	I <sub>q</sub>	kA rms	100	100
Rated conditional short-circuit making * <sup>(3)</sup>		kA rms	100	100
Maximum cut - off current		kA (peak)	43,3	43,3
Maximum power dissipation		A <sup>2</sup> s (x 10 <sup>3</sup> )	1600	1600
Number of mechanical operations (according to the standards, for other values please consult)		Cycles	8000	5000
Maximum weight 3P		kg		Consult
Maximum weight 3P+N		kg		Consult



Also available 4P switch - disconnectors under request, please consult



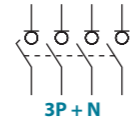
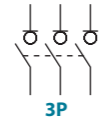
Standard supply

# CIF22 Metal enclosed switch fuses IP65 3P - 3P+N

**Size 3**  
**A 630 | 800**



	<b>CODE-630A</b>	<b>CODE-800A</b>
<b>3P</b>	CIF22C06303PSD3	CIF22C08003PSD3
<b>3P+N</b>	CIF22C06303NSD3	CIF22C08003NSD3



### Accessories

**External handle** included  
IP65

**Emergency external handle** under request  
IP65

**Auxiliary contacts**  
 1NO+1NC CODE D5LAU01  
 2NO+2NC CODE D5LAU02  
 Ie = 16 A (resistive loads)  
 4 A (inductive loads) at 250 Vac.

### Terminal shrouds

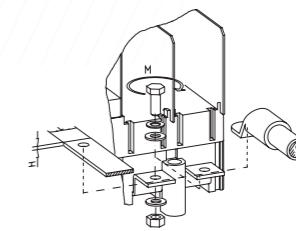
<b>INPUT 3P</b>	<b>OUTPUT 3P</b>	<b>INPUT/OUTPUT 4P</b>
DM2CU31	DM2CU32	DM2CU33

(1 kit for input or output)

### Safety key lock device

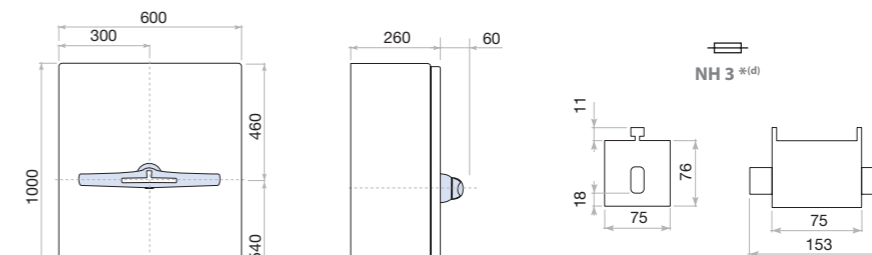
Simple CODE DS-CB31  
 Double CODE DS-CF31

For external handle, lock the handle by means of a key in position "OFF" (under request, in "ON"), the key can only be removed with the handle locked



	S max (Cu)	H max (Cu)	L max (Cu)	T	M
630A	2x185 mm <sup>2</sup>	2x7 mm	50 mm	M12	45 Nxm
800A	2x240 mm <sup>2</sup>	2x7 mm	50 mm	M8	13 Nxm

### Dimensions (mm)



Fuse max dimensions

\*<sup>(d)</sup> Other fuses type, may be required changing the dimensions, please consult

### Technical information



According to IEC 60947-3  
 IEC 61439-2

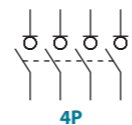
			<b>630</b>	<b>800</b>
Fuses	NH/DIN		3	3
Rated thermal current in enclosure 40°C	I <sub>the</sub>	A	630	725
Rated insulation voltage	U <sub>i</sub>	V	1000	1000
Rated impulse withstand voltage	U <sub>imp</sub>	kV	12	12
Power dissipation in fuse links * <sup>(1)</sup>	NH/DIN	W	48	57
AC rated operational current * <sup>(2)</sup>	U <sub>e</sub> 400 V AC21A	A	630	800
(Rated frequency 50/60 Hz)	U <sub>e</sub> 400 V AC22A	A	630	800
	U <sub>e</sub> 400 V AC23B	A	630	630

			<b>630</b>	<b>800</b>
Rated breaking capacity	400 V; cos φ = 0,35÷0,45	A	5040	5040
Rated making capacity	400 V; cos φ = 0,45	A	6300	6300
<b>Conditional short - circuit current</b>				
Rated conditional short-circuit current * <sup>(3)</sup>	I <sub>q</sub>	kA rms	100	100
Rated conditional short-circuit making * <sup>(3)</sup>		kA rms	100	100
Maximum cut - off current		kA (peak)	60,8	60,8
Maximum power dissipation		A <sup>2</sup> s (x 10 <sup>3</sup> )	4600	4600
Number of mechanical operations (according to the standards, for other values please consult)		Cycles	5000	3000
Maximum weight 3P		kg		Consult
Maximum weight 3P+N		kg		Consult

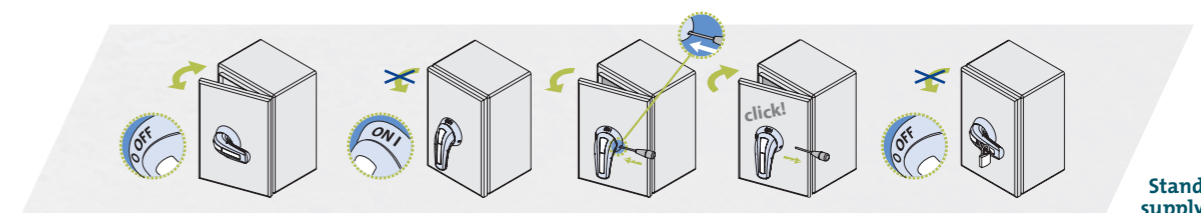
\*<sup>(1)</sup> Power dissipation values of fuse - links used in type tests. Please consult for fuse - links with higher power dissipation

\*<sup>(2)</sup> Other voltages and / or utilization categories. Please consult

\*<sup>(3)</sup> With a protective device limiting the cut - off current and the joule integral to the indicated values



Also available 4P switch - disconnectors under request, please consult



Standard supply