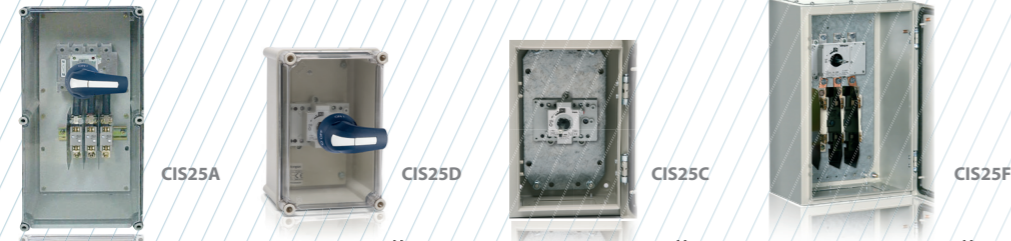
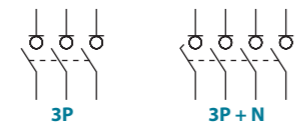


# CIS25 - A - C - D - F Enclosed switch - disconnecter IP65 (with or without fuse holders) 3P - 3P+N

Size 00  
A 40|63|80



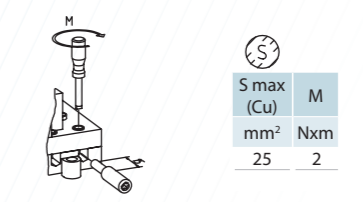
Enclosure	Model	3P	40	63	80
polyester enclosure + fuse holders	CIS25A	3P	CIS25A00403PB	CIS25A00633PB	CIS25A00803PB
		3P+N	CIS25A00403NB	CIS25A00633NB	CIS25A00803NB
polyester enclosure	CIS25D	3P	CIS25D00403PB	CIS25D00633PB	CIS25D00803PB
		3P+N	CIS25D00403NB	CIS25D00633NB	CIS25D00803NB
metal enclosure	CIS25C	3P	CIS25C00403PB	CIS25C00633PB	CIS25C00803PB
		3P+N	CIS25C00403NB	CIS25C00633NB	CIS25C00803NB
metal enclosure + fuse holders	CIS25F	3P	CIS25F00403PB	CIS25F00633PB	CIS25F00803PB
		3P+N	CIS25F00403NB	CIS25F00633NB	CIS25F00803NB



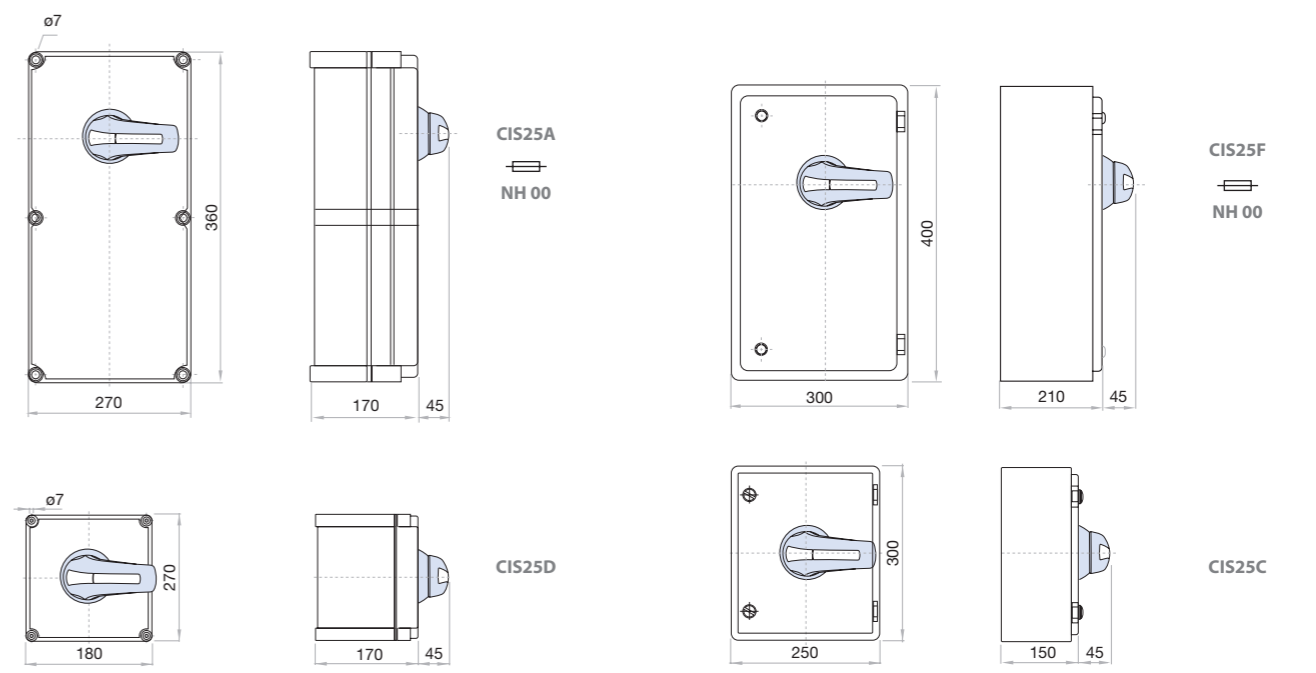
## Accessories

- External handle** included IP65
- Emergency external handle** under request IP65
- Auxiliary contacts**  
1NO+1NC CODE D5LAU01  
2NO+2NC CODE D5LAU02  
Ie = 16 A (resistive loads)  
4 A (inductive loads) at 250 Vac.

**Safety key lock device**  
Simple CODE DS-CAB1  
Double CODE DS-CEB1  
For external handle, lock the handle by means of a key in position "OFF" (under request, in "ON"), the key can only be removed with the handle locked



## Dimensions (mm)



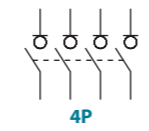
## Technical information



According to IEC 60947-3  
IEC 61439-2

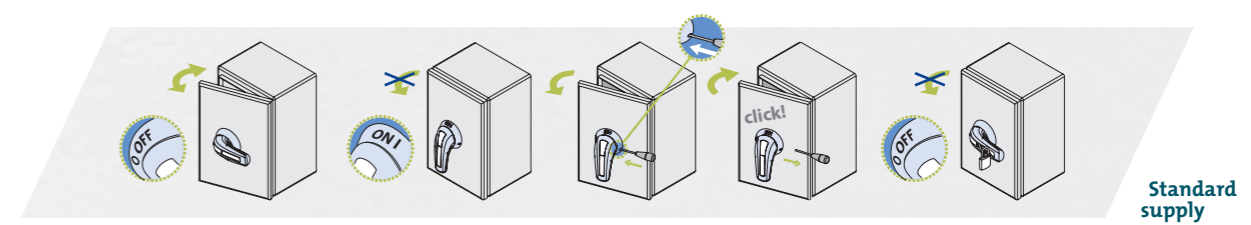
				40	63	80
Rated thermal current in ambient at	I <sub>the</sub>	40 °C	A	50	63	80
Rated insulation voltage	U <sub>i</sub>	V		800	800	800
Rated impulse withstand voltage	U <sub>imp</sub>	kV		8	8	8
AC rated operational current <sup>(*)</sup>	I <sub>e</sub>	U <sub>e</sub> 400V AC21A	A	50	63	80
		U <sub>e</sub> 400V AC22A	A	50	63	63
(Rated operational frequency 50/60 Hz)		U <sub>e</sub> 400V AC23A	A	50	50	50
Rated breaking capacity		400V AC23	A	400	400	400
Rated making capacity		400V AC23	A	500	500	500

			40	63	80
<b>Short - circuit behaviour</b>					
Rated short-circuit making capacity <sup>(*)</sup>	I <sub>cm</sub>	kA (peak)	5	5	5
Rated short-time withstand current (1sec.)	I <sub>cw</sub>	kA rms	3	3	3
<b>Mechanical features</b>					
Number of mechanical operations (according to the standards, for other values please consult)	Cycles		10000	10000	10000
Maximum weight 3P		Kg		Consult	
Maximum weight 3P+N		Kg		Consult	



Also available 4P switches under request, please consult

<sup>(\*)</sup> Other voltages and / or utilization categories. Please consult  
<sup>(\*\*)</sup> Without limiting protective device (short-circuit maintained 50... 100 ms)

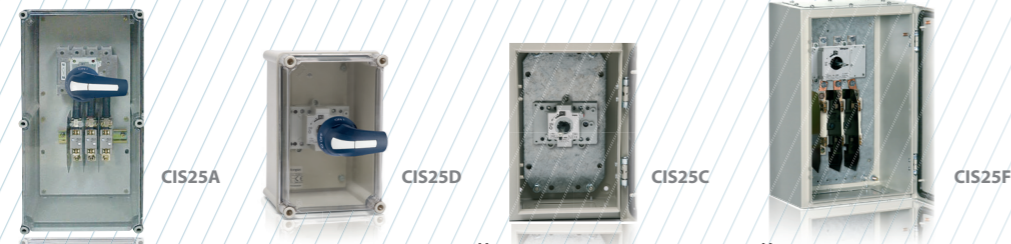


Standard supply

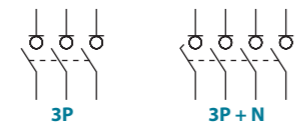


# CIS25 - A - C - D - F Enclosed switch - disconnecter IP65 (with or without fuse holders) 3P - 3P+N

Size 0  
A 125|160



Enclosure	Model	Code	125A	160A
polyester enclosure + fuse holders	CIS25A 3P	CIS25A01253PB	CIS25A01603PB	
	CIS25A 3P+N	CIS25A01253NB	CIS25A01603NB	
polyester enclosure	CIS25D 3P	CIS25D01253PB	CIS25D01603PB	
	CIS25D 3P+N	CIS25D01253NB	CIS25D01603NB	
metal enclosure	CIS25C 3P	CIS25C01253PB	CIS25C01603PB	
	CIS25C 3P+N	CIS25C01253NB	CIS25C01603NB	
metal enclosure + fuse holders	CIS25F 3P	CIS25F01253PB	CIS25F01603PB	
	CIS25F 3P+N	CIS25F01253NB	CIS25F01603NB	



### Accessories

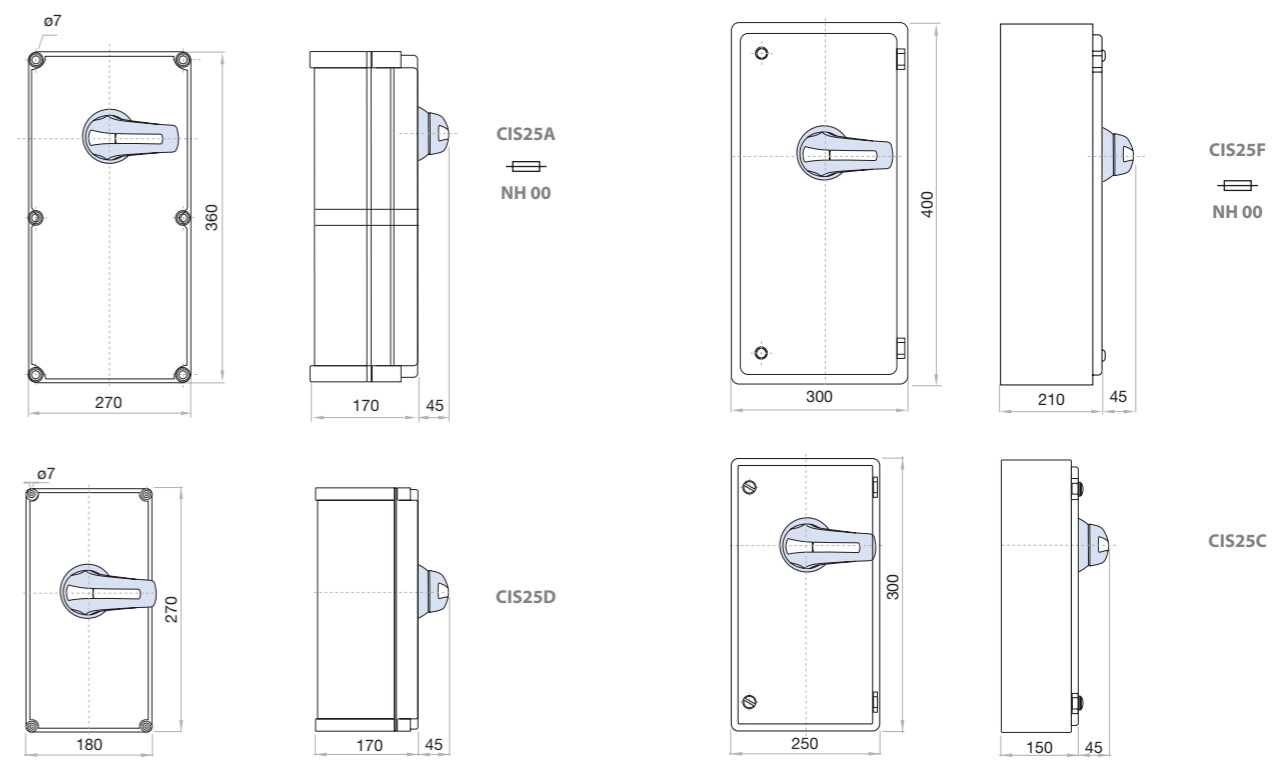
- External handle** included IP65
- Emergency external handle** under request IP65
- Auxiliary contacts**  
1NO+1NC CODE D5LAU01  
2NO+2NC CODE D5LAU02  
Ie = 16 A (resistive loads)  
4 A (inductive loads) at 250 Vac.

### Safety key lock device

Simple CODE DS-CAB1  
Double CODE DS-CEB1  
For external handle, lock the handle by means of a key in position "OFF" (under request, in "ON"), the key can only be removed with the handle locked

S max (Cu)	M
mm <sup>2</sup>	Nxm
95	4

### Dimensions (mm)



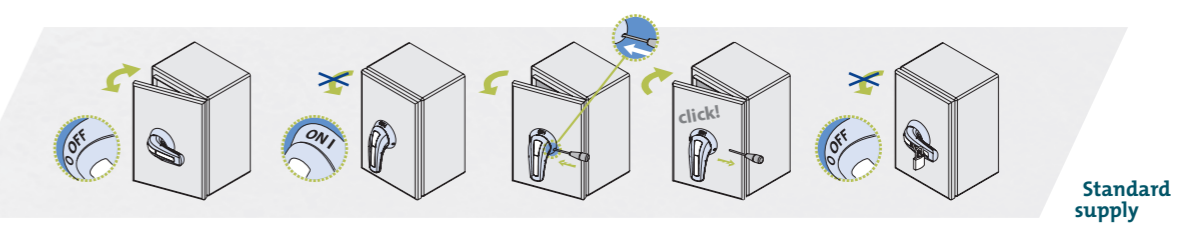
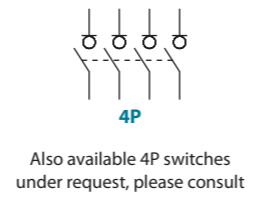
### Technical information



According to IEC 60947-3  
IEC 61439-2

				125	160
Rated thermal current in ambient at	I <sub>the</sub>	40 °C	A	125	160
Rated insulation voltage	U <sub>i</sub>	V		1000	1000
Rated impulse withstand voltage	U <sub>imp</sub>	kV		8	8
AC rated operational current <sup>(*)</sup>	I <sub>e</sub>	U <sub>e</sub> 400V AC21A	A	125	160
(Rated operational frequency 50/60 Hz)		U <sub>e</sub> 400V AC22A	A	125	160
		U <sub>e</sub> 400V AC23A	A	125	160
Rated breaking capacity		400V AC23	A	1000	1280
Rated making capacity		400V AC23	A	1250	1600

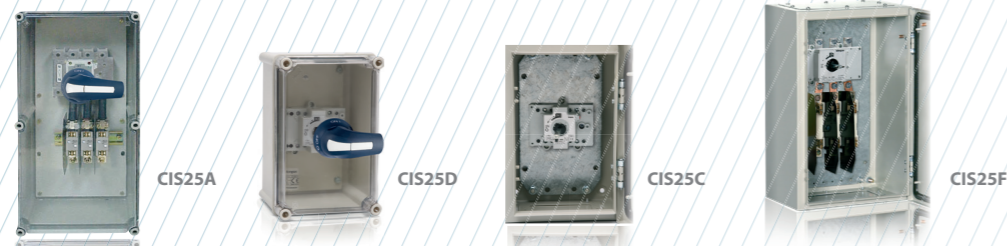
		125	160
<b>Short - circuit behaviour</b>			
Rated short-circuit making capacity <sup>(*)</sup>	I <sub>cm</sub> kA (peak)	13	13
Rated short-time withstand current (1sec.)	I <sub>cw</sub> kA rms	7	7
<b>Mechanical features</b>			
Number of mechanical operations (according to the standards, for other values please consult)	Cycles	8000	8000
Maximum weight 3P	Kg		Consult
Maximum weight 3P+N	Kg		Consult



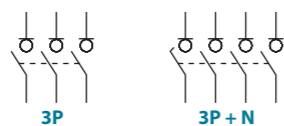


# CIS25 - A - C - D - F Enclosed switch - disconnecter IP65 (with or without fuse holders) 3P - 3P+N

Size 1  
A 200|250|315|400



Enclosure	Model	200A	250A	315A	400A
polyester enclosure + fuse holders	CIS25A 3P	CODE-200A CIS25A02003PR	CODE-250A CIS25A02503PR	CODE-315A CIS25A03153PR	CODE-400A CIS25A04003PR
	CIS25A 3P+N	CIS25A02003NR	CIS25A02503NR	CIS25A03153NR	CIS25A04003NR
polyester enclosure	CIS25D 3P	CIS25D02003PR	CIS25D02503PR	CIS25D03153PR	CIS25D04003PR
	CIS25D 3P+N	CIS25D02003NR	CIS25D02503NR	CIS25D03153NR	CIS25D04003NR
metal enclosure	CIS25C 3P	CIS25C02003PR	CIS25C02503PR	CIS25C03153PR	CIS25C04003PC
	CIS25C 3P+N	CIS25C02003NR	CIS25C02503NR	CIS25C03153NR	CIS25C04003NC
metal enclosure + fuse holders	CIS25F 3P	CIS25F02003PR	CIS25F02503PR	CIS25F03153PR	CIS25F04003PR
	CIS25F 3P+N	CIS25F02003NR	CIS25F02503NR	CIS25F03153NR	CIS25F04003NR



## Technical information



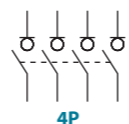
According to IEC 60947-3  
IEC 61439-2

			200	250	315	400
Rated thermal current in ambient at	I <sub>the</sub>	40 °C	A 200	A 250	A 315	A 400
Rated insulation voltage	U <sub>i</sub>	V	1000	1000	1000	1000
Rated impulse withstand voltage	U <sub>imp</sub>	kV	8	8	8	8
AC rated operational current <sup>(1)</sup>	I <sub>e</sub>	U <sub>e</sub> 400V AC21A	A 200	A 250	A 315	A 400
		U <sub>e</sub> 400V AC22A	A 200	A 250	A 315	A 400
(Rated operational frequency 50/60 Hz)		U <sub>e</sub> 400V AC23A	A 200	A 250	A 315	A 400
Rated breaking capacity		400V AC23	A 1600	A 2000	A 2520	A 3200
Rated making capacity		400V AC23	A 2000	A 2500	A 3150	A 4000

<sup>(1)</sup> Other voltages and / or utilization categories. Please consult

<sup>(2)</sup> Without limiting protective device (short-circuit maintained 50... 100 ms.)

			200	250	315	400
<b>Short - circuit behaviour</b>						
Rated short-circuit making capacity <sup>(2)</sup>	I <sub>cm</sub> kA (peak)		20	20	20	20
Rated short-time withstand current (1sec.)	I <sub>cw</sub> kA rms		12	12	12	12
<b>Mechanical features</b>						
Number of mechanical operations (according to the standards, for other values please consult)	Cycles		8000	8000	8000	5000
Maximum weight 3P		Kg				Consult
Maximum weight 3P+N		Kg				Consult



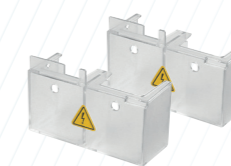
Also available 4P switches under request, please consult

## Accessories

**External handle** included  
IP65

**Emergency external handle** under request  
IP65

**Auxiliary contacts**  
1NO+1NC CODE D5LAU01  
2NO+2NC CODE D5LAU02  
I<sub>e</sub> = 16 A (resistive loads)  
4 A (inductive loads) at 250 Vac.

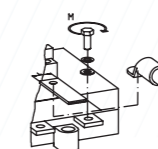


**Terminal protection**  
CODE DS-CU11  
(1 kit for input or output)



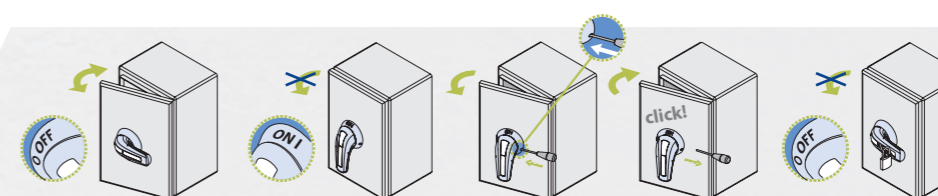
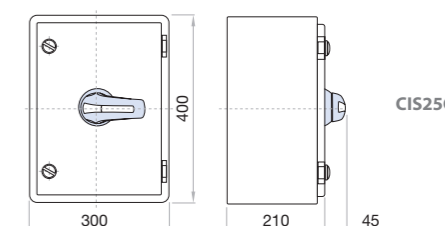
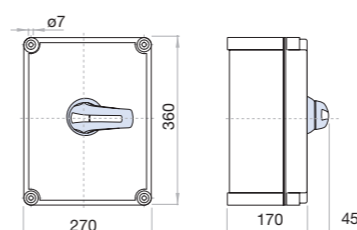
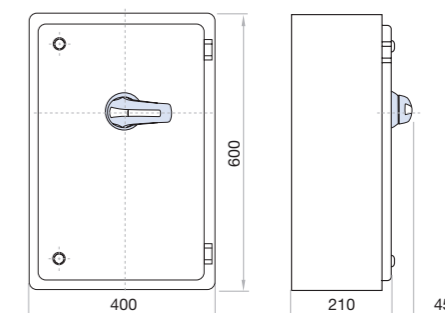
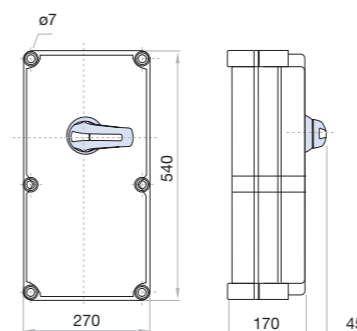
**Safety key lock device**  
Simple CODE DS-CA11  
Double CODE DS-CE11

For external handle, lock the handle by means of a key in position "OFF" (under request, in "ON"), the key can only be removed with the handle locked



	S max (Cu)	H max (Cu)	L max (Cu)	M
200 A	mm <sup>2</sup>	mm	mm	M8 13
250 A	185	7	25	M10 18
315 A				
400 A	240	7	40	M10 24

## Dimensions (mm)



Standard supply

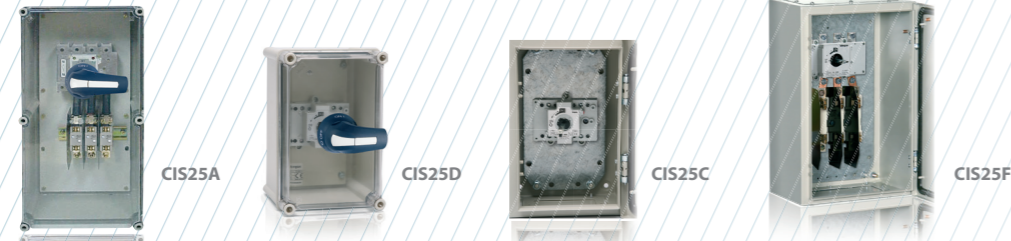


# CIS25 - A - C - D - F

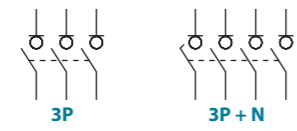
## Enclosed switch - disconnecter

### IP65 (with or without fuse holders) 3P - 3P+N

Size 2  
A 400|630



Enclosure	Model	CODE - 400A		CODE - 630A	
		3P	3P+N	3P	3P+N
polyester enclosure + fuse holders	CIS25A	CIS25A04003PR	CIS25A06303PR	CIS25A04003NR	CIS25A06303NR
		CIS25D04003PR	CIS25D06303PR	CIS25D04003NR	CIS25D06303NR
polyester enclosure	CIS25D	CIS25C04003PR	CIS25C06303PR	CIS25C04003NR	CIS25C06303NR
		CIS25F04003PR	CIS25F06303PR	CIS25F04003NR	CIS25F06303NR
metal enclosure	CIS25C				
metal enclosure + fuse holders	CIS25F				



### Accessories

- External handle** included IP65
- Emergency external handle** under request IP65
- Auxiliary contacts**  
1NO+1NC CODE D5LAU01  
2NO+2NC CODE D5LAU02  
Ie = 16 A (resistive loads)  
4 A (inductive loads) at 250 Vac.

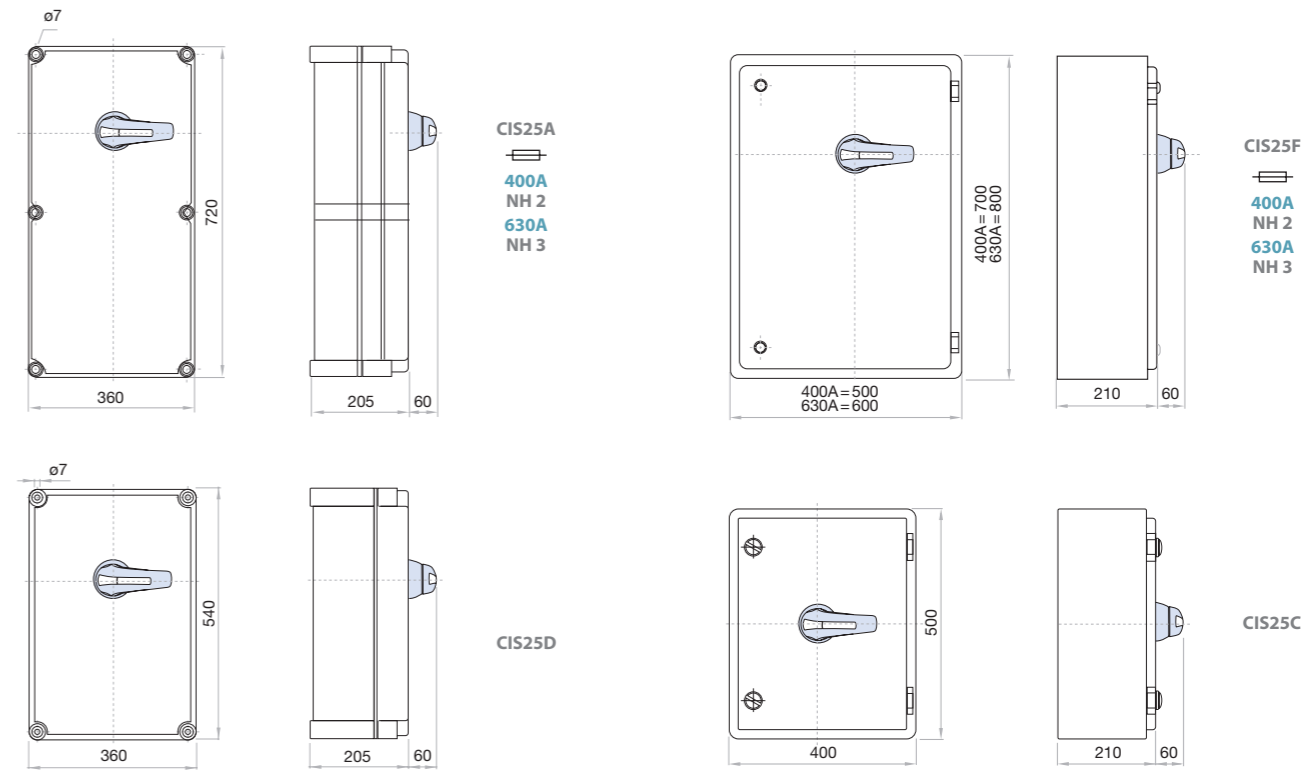
**Terminal protection**  
CODE DS-CU21  
(1 kit for input or output)

**Safety key lock device**  
Simple CODE DS-CB21  
Double CODE DS-CF21

For external handle, lock the handle by means of a key in position "OFF" (under request, in "ON"), the key can only be removed with the handle locked

	S max (Cu)	H max (Cu)	L max (Cu)	M
400 A	2x185	6	40	M10 24
630 A	2x240	2x5	40	

### Dimensions (mm)



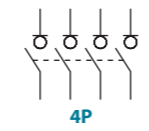
### Technical information



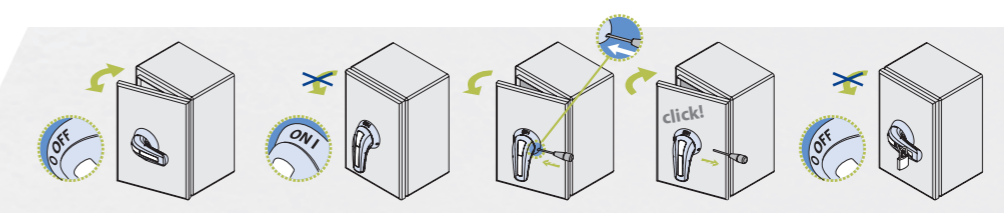
According to IEC 60947-3  
IEC 61439-2

				400	630
Rated thermal current in ambient at	I <sub>the</sub>	40 °C	A	400	630
Rated insulation voltage	U <sub>i</sub>		V	1000	1000
Rated impulse withstand voltage	U <sub>imp</sub>		kV	12	12
AC rated operational current <sup>(*)</sup>	I <sub>e</sub>	U <sub>e</sub> 400V AC21A	A	400	630
(Rated operational frequency 50/60 Hz)		U <sub>e</sub> 400V AC22A	A	400	630
Rated breaking capacity		U <sub>e</sub> 400V AC23A	A	400	630
Rated making capacity		400V AC23	A	3200	5000
		400V AC23	A	4000	6300

		400	630
<b>Short - circuit behaviour</b>			
Rated short-circuit making capacity <sup>(**)</sup>	I <sub>cm</sub> kA (peak)	26	26
Rated short-time withstand current (1sec.)	I <sub>cw</sub> kA rms	16	16
<b>Mechanical features</b>			
Number of mechanical operations (according to the standards, for other values please consult)	Cycles	5000	5000
Maximum weight 3P	Kg		Consult
Maximum weight 3P+N	Kg		Consult



Also available 4P switches under request, please consult

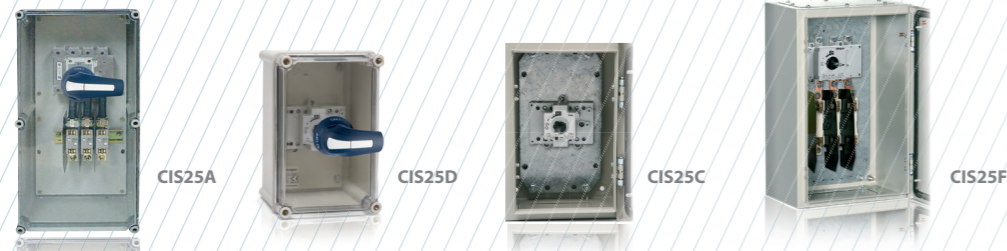


Standard supply

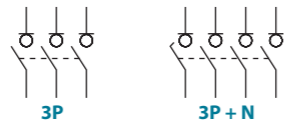


# CIS25 - A - C - D - F Enclosed switch - disconnecter IP65 (with or without fuse holders) 3P - 3P+N

Size 3  
A 800



Enclosure	Model	Configuration	Code
polyester enclosure + fuse holders	CIS25A	3P	CIS25A08003PR
		3P + N	CIS25A08003NR
polyester enclosure	CIS25D	3P	CIS25D08003PR
		3P + N	CIS25D08003NR
metal enclosure	CIS25C	3P	CIS25C08003PR
		3P + N	CIS25C08003NR
metal enclosure + fuse holders	CIS25F	3P	CIS25F08003PR
		3P + N	CIS25F08003NR



## Accessories



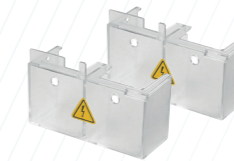
» External handle included  
IP65



» Emergency external handle under request  
IP65



» Auxiliary contacts  
1NO+1NC CODE D5LAU01  
2NO+2NC CODE D5LAU02  
Ie = 16 A (resistive loads)  
4 A (inductive loads) at 250 Vac.

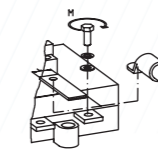


» Terminal protection  
CODE DS-CU31  
(1 kit for input or output)



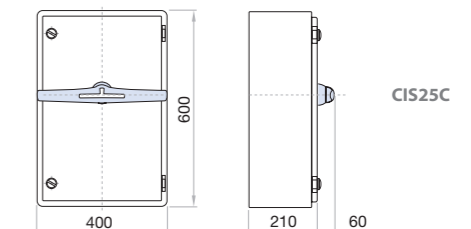
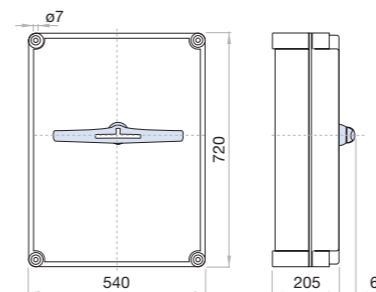
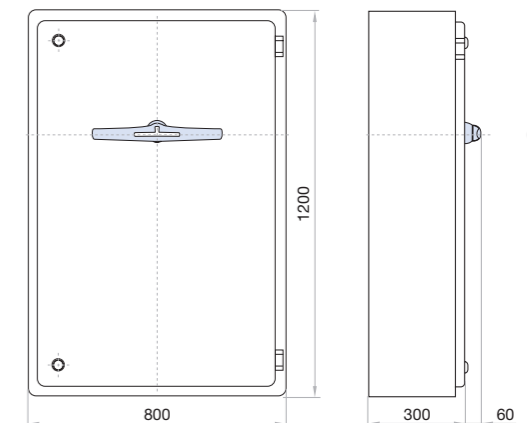
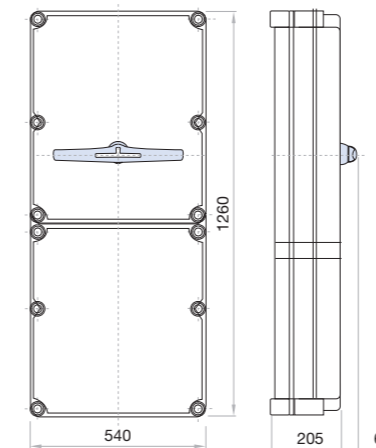
» Safety key lock device  
Simple CODE DS-CB31  
Double CODE DS-CF31

For external handle, lock the handle by means of a key in position "OFF" (under request, in "ON"), the key can only be removed with the handle locked



S max (Cu)	H max (Cu)	L max (Cu)	T	M
mm <sup>2</sup>	mm	mm		Nxm
2x240	2x10	50	M14	45

## Dimensions (mm)



## Technical information

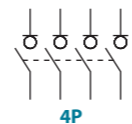


According to IEC 60947-3  
IEC 61439-2

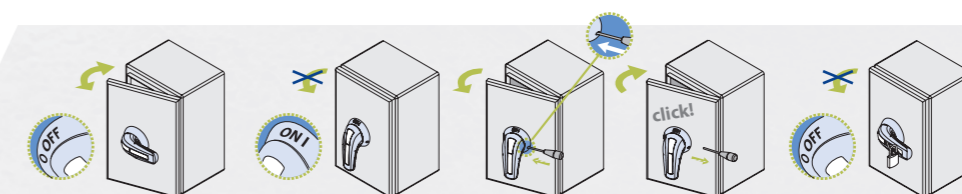
Parameter	Value	800
Rated thermal current in ambient at	I <sub>the</sub> 40 °C A	800
Rated insulation voltage	U <sub>i</sub> V	1000
Rated impulse withstand voltage	U <sub>imp</sub> kV	12
AC rated operational current <sup>(*)1</sup>	I <sub>e</sub> U <sub>e</sub> 400V AC21A A	800
(Rated operational frequency 50/60 Hz)	U <sub>e</sub> 400V AC22A A	800
Rated breaking capacity	400V AC23 A	6400
Rated making capacity	400V AC23 A	8000

<sup>(\*)1</sup> Other voltages and / or utilization categories. Please consult  
<sup>(\*)2</sup> Without limiting protective device (short-circuit maintained 50... 100 ms.)

Parameter	Value	800
<b>Short - circuit behaviour</b>		
Rated short-circuit making capacity <sup>(*)2</sup>	I <sub>cm</sub> kA (peak)	60
Rated short-time withstand current (1sec.)	I <sub>cw</sub> kA rms	25
<b>Mechanical features</b>		
Number of mechanical operations (according to the standards, for other values please consult)	Cycles	3000
Maximum weight 3P	Kg	Consult
Maximum weight 3P+N	Kg	Consult



Also available 4P switches under request, please consult



Standard supply



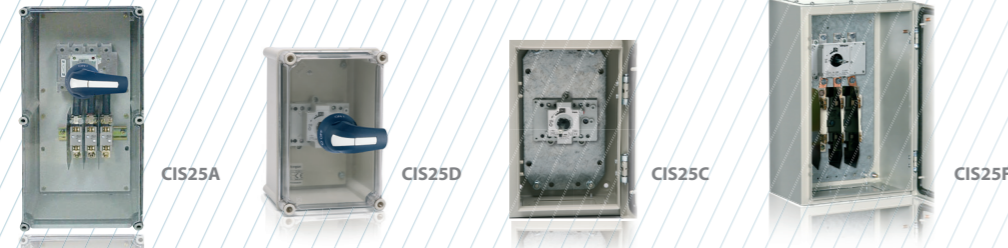
# CIS25 - A - C - D - F

## Enclosed switch - disconnecter

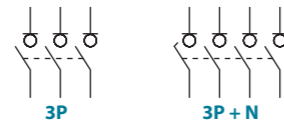
### IP65 (with or without fuse holders) 3P - 3P+N

Size 4  
\*A 1000|1250|1600

\*(A) Under request higher currents are available, please consult.



Enclosure	Model	Poles	Current Rating (A)		
			1000	1250	1600
polyester enclosure + fuse holders	CIS25A	3P	1000	1250	1600
	CIS25A	3P+N	1000	1250	1600
polyester enclosure	CIS25D	3P	1000	1250	1600
	CIS25D	3P+N	1000	1250	1600
metal enclosure	CIS25C	3P	1000	1250	1600
	CIS25C	3P+N	1000	1250	1600
metal enclosure + fuse holders	CIS25F	3P	1000	1250	1600
	CIS25F	3P+N	1000	1250	1600



### Technical information

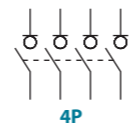


According to IEC 60947-3  
IEC 61439-2

		Current Rating (A)		
		1000	1250	1600
Rated thermal current in ambient at	$I_{the}$	4000	4000	4000
Rated insulation voltage	$U_i$	1000	1000	1000
Rated impulse withstand voltage	$U_{imp}$	12	12	12
AC rated operational current <sup>(*)1</sup>	$I_e$	1000	1250	1600
(Rated operational frequency 50/60 Hz)				
Rated breaking capacity		3000	3750	4800
Rated making capacity		3000	3750	4800

<sup>(\*)1</sup> Other voltages and / or utilization categories. Please consult  
<sup>(\*)2</sup> Without limiting protective device (short-circuit maintained 50... 100 ms.)  
<sup>(\*)3</sup> IP43

		Current Rating (A)		
		1000	1250	1600
<b>Short - circuit behaviour</b>				
Rated short-circuit making capacity <sup>(*)2</sup>	$I_{cm}$ kA (peak)	60	60	75
Rated short-time withstand current (1sec.)	$I_{cw}$ kA rms	25	25	50
<b>Mechanical features</b>				
Number of mechanical operations (according to the standards, for other values please consult) <sup>(*)3</sup>	Cycles	3000	3000	3000
Maximum weight 3P	Kg		Consult	
Maximum weight 3P+N	Kg		Consult	



Also available 4P switches under request, please consult

### Accessories



» External handle included IP65



» Emergency external handle under request IP65



» Auxiliary contacts  
1NO+1NC CODE D5LAU01  
2NO+2NC CODE D5LAU02  
 $I_e = 16$  A (resistive loads)  
4 A (inductive loads) at 250 Vac.



» Terminal protection  
CODE DS-CU41  
(1 kit for input or output)



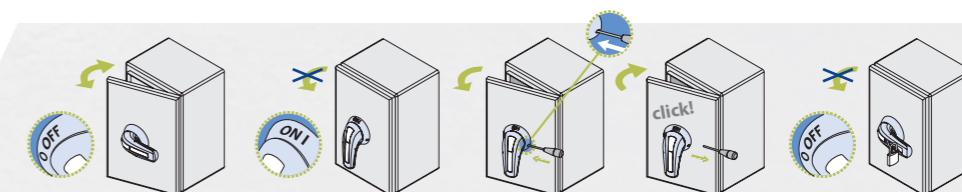
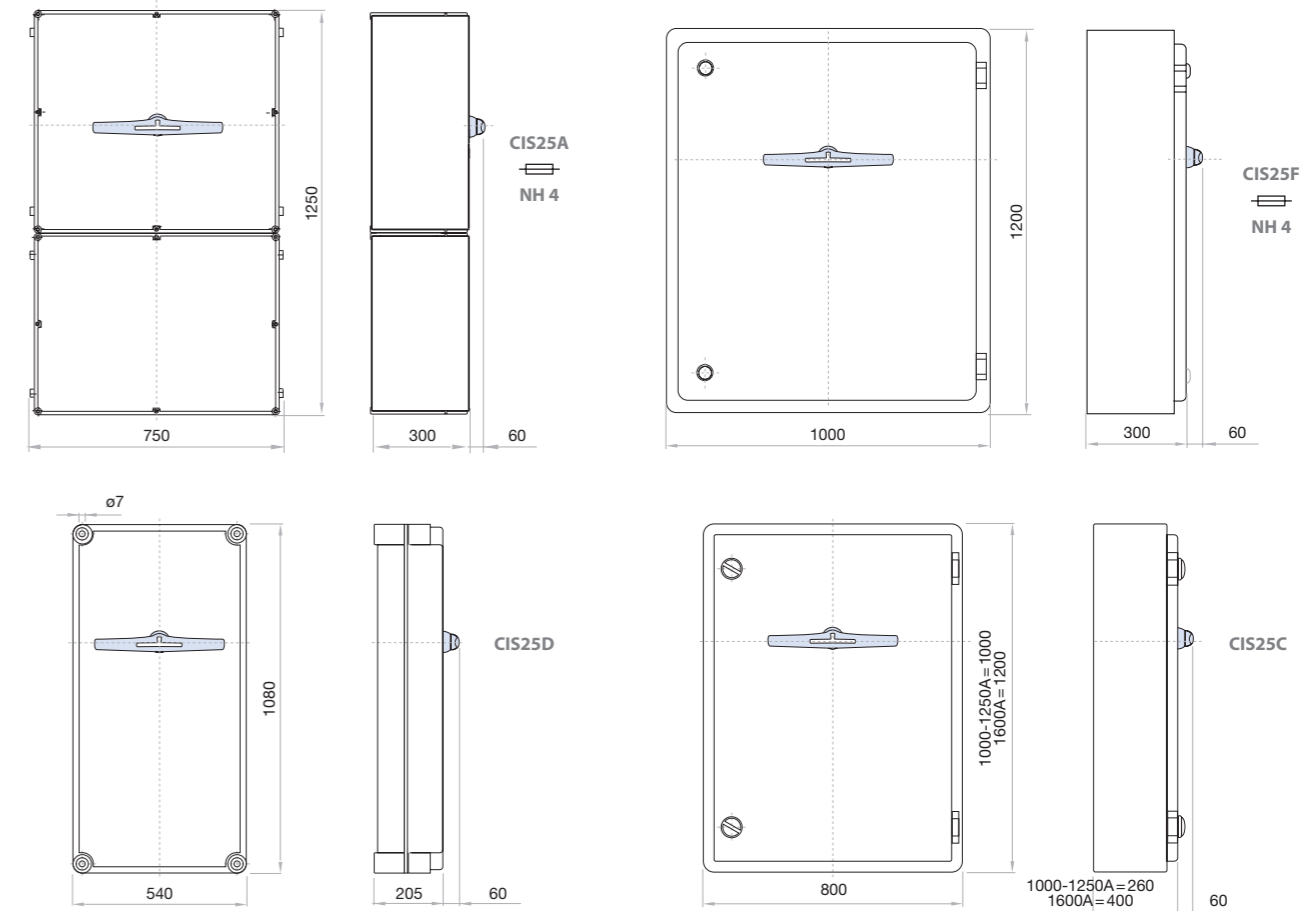
» Safety key lock device  
Simple CODE DS-CB41  
Double CODE DS-CF41

For external handle, lock the handle by means of a key in position "OFF" (under request, in "ON"), the key can only be removed with the handle locked



	H max (Cu) mm	L max (Cu) mm	M	M
			Nxm	Nxm
1000 A		80	M16	80
1250 A	2x10	80	M16	80
1600 A			M14	55

### Dimensions (mm)



Standard supply