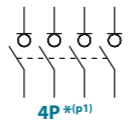




S5 DC Switch - disconnecter for DC current 4P

Size 1
A 100|160|250|400
 1000Vdc



Technical information

According to IEC 60947-1
IEC 60947-3



			100	160	250	400
Rated thermal current in ambient at	lth	40° C	A 125	200	315	400
		50° C	A 125	200	315	400
		60° C	A 125	200	280	320
Rated insulation voltage DC20	Ui	V	1500	1500	1500	1500
Rated impulse withstand voltage	Uimp	kV	8	8	8	8
Rated operational current ⁽¹⁾ DC21B	le	1000 Vdc	A 100	160	250	400

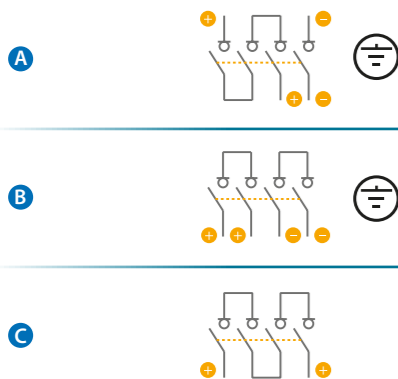
tests:

			100	160	250	400
Short - circuit behaviour						
Short - circuit making capacity ⁽²⁾	lcm	kA (peak)	20	20	20	20
Rated short-time withstand current (1sec.)	lcw	kA rms	12	12	12	12
Number of mechanical operations (according to the standards, for other values please consult)	Cycles		10000	8000	8000	5000
Maximum weight (without bridging links)	Kg		1,9	1,9	1,9	2,1

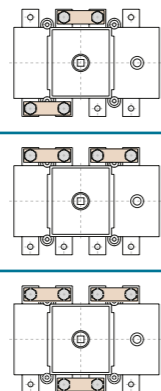
⁽¹⁾ Other voltages and / or utilization categories. Please consult
⁽²⁾ Without limiting protective device (short-circuit maintained 50... 100 ms.)

Connection diagram

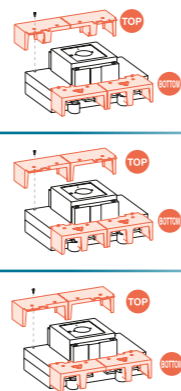
Connection diagram



Bridging links ^(p1)



Terminal shrouds



CONSULT FOR GROUNDED INSTALLATIONS

Accessories

- Direct handle**
CODE DS-SI11
- Auxiliary contacts**
1NO+1NC CODE D5LAU01
2NO+2NC CODE D5LAU02
Ie = 16 A (resistive loads)
4 A (inductive loads) at 250 Vac.
- External handle** included shaft ^(e1)
IP65
CODE DS-SA11
- External handle** without shaft
IP65
CODE DS-SA14
- Terminal protection**
CODE DS-CU12
(1 unit for input or output)
- Terminal shrouds** (2 units) ^(p1)

	A	B	C
TOP	DS-CU18	DS-CU10	DS-CU10
BOTTOM	DS-CU19	DS-CU11	DS-CU18
- Shafts**
 - Standard shaft** included ^(e1)
L (mm) 227 | P (mm) 103... 256
 - Shaft extensions**

Type	L (mm)	P (mm)	CODE
Type 1	375	103... 415	DS-EP14
Type 2	536	103... 576	DS-EP15
- Bridging links ^(p1)**

	A	B	C
CODE DS-PI11 (2 units)			
CODE DS-PI14 (2 units)			
CODE CONSULT			

Dimensions (mm)

Door drilling for external handle

	H	I	J	ØT
100 A	130	150	20	M8
160 A	143	167	25	M10

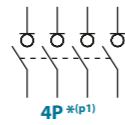
	S max (Cu) mm ²	H max (Cu) mm	L max (Cu) mm	M
100 A	185	7	25	M8
160 A				M10
250 A				M10

	S max (Cu) mm ²	Z max	H max (Cu) mm	L max (Cu) mm	M
400 A	240	44	7	40	M10
					M10



S5 DC Switch - disconnecter for DC current 4P

Size 2
A 500|630
 1000Vdc



Technical information

According to IEC 60947-1
 IEC 60947-3



			500	630
Rated thermal current in ambient at	lth 40° C	A	500	630
	50° C	A	500	630
	60° C	A	400	500
Rated insulation voltage DC20	Ui	V	1500	1500
Rated impulse withstand voltage	Uimp	kV	12	12
Rated operational current ^{*(1)} DC21B	le 1000 Vdc	A	500	630

tests:

			500	630
Short - circuit behaviour				
Short - circuit making capacity ^{*(2)}	lcm	kA (peak)	26	26
Rated short-time withstand current (1sec.)	lcw	kA rms	16	16
Number of mechanical operations (according to the standards, for other values please consult)	Cycles		5000	5000
Maximum weight (without bridging links)	Kg		4,5	4,5

^{*(1)} Other voltages and / or utilization categories. Please consult
^{*(2)} Without limiting protective device (short-circuit maintained 50... 100 ms.)

Connection diagram

Connection diagram

Bridging links^{*(p1)}

Terminal shrouds

A, B, C connection diagrams and terminal shroud views.

Accessories

- Direct handle**
CODE DS-LI21
- External handle** included shaft^{*(e1)}
IP65
CODE DS-LA21
- External handle** without shaft
IP65
CODE DS-LA24
- Shafts**
Standard shaft included^{*(e1)}

L (mm)	P (mm)	
195	134... 240	

Shaft extensions

Type 1		
L (mm)	P (mm)	CODE
345	134... 400	DS-EP23
Type 2		
L (mm)	P (mm)	CODE
535	134... 560	DS-EP24
- Auxiliary contacts**
 1NO+1NC CODE D5LAU01
 2NO+2NC CODE D5LAU02
 Ie = 16 A (resistive loads)
 4 A (inductive loads) at 250 Vac.
- Terminal protection**
CODE DS-CU22
(1 unit for input or output)
- Terminal shrouds** (2 units - only for 500A)

	A	B	C
TOP	DS-CU28	DS-CU20	DS-CU20
BOTTOM	DS-CU29	DS-CU21	DS-CU28
- Bridging links^{*(p1)}**

A	B	500A	CODE DS-PI21 (2 units)
C			CODE CONSULT
B		630A	CODE DS-PI2D (2 units)

^{*(p1)} To comply with the operation and electrical features, the bridging links must be assembled to the switch. Please consult.

Dimensions (mm)

Door drilling for external handle

500 A

630 A

	S max (Cu) mm ²	H max (Cu) mm	L max (Cu) mm	T	M
500 A	2x240	2x5	40	M10	24
630 A			50		

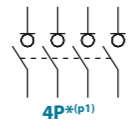


S5 DC Switch - disconnecter for DC current 4P

Size 3

A 850|1250

1000Vdc



Technical information

According to IEC 60947-1
IEC 60947-3



		850		1250	
Rated thermal current in ambient at	lth 40° C	A	850	1250	
	50° C	A	850	1250	
	60° C	A	700	1000	
Rated insulation voltage DC20	Ui	V	1500	1500	
Rated impulse withstand voltage	Uimp	kV	12	12	
Rated operational current ^{*(1)} DC21B	le 1000 Vdc	A	850	1250	

		850		1250	
Short - circuit behaviour					
Short - circuit making capacity ^{*(2)}	Icm	kA (peak)	60	60	
Rated short-time withstand current (1sec.)	Icw	kA rms	25	25	
Number of mechanical operations (according to the standards, for other values please consult)	Cycles		3000	3000	
Maximum weight (without bridging links)	Kg		7,6	7,6	

^{*(1)} Other voltages and / or utilization categories. Please consult
^{*(2)} Without limiting protective device (short-circuit maintained 50... 100 ms.)

Connection diagram

Connection diagram

A

B

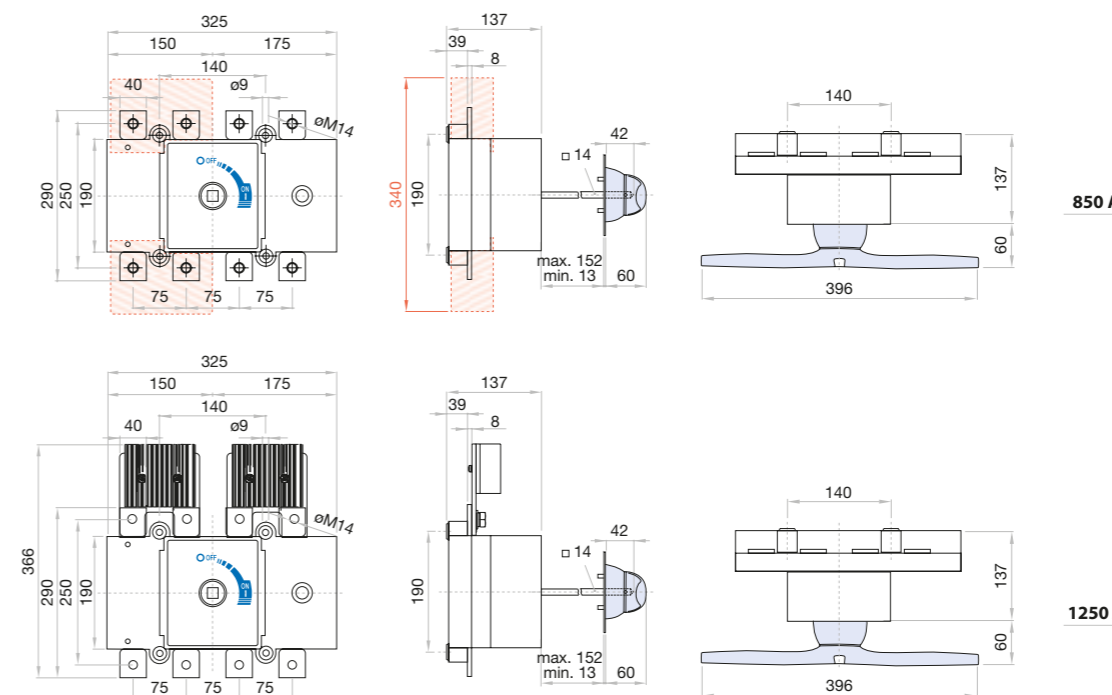
C

Bridging links ^{*(p1)}

Terminal shrouds

CONSULT FOR GROUNDED INSTALLATIONS

Dimensions (mm)



Door drilling for external handle

S max (Cu)	H max (Cu)	L max (Cu)	T	M
mm ²	mm	mm		Nxm
2x300	2x10	50	M14	45

Accessories



» Direct handle

CODE DS-LI31



» External handle included shaft ^{*(e1)}

IP65
CODE DS-LA31



» External handle without shaft

IP65
CODE DS-LA33



» Auxiliary contacts

1NO+1NC CODE D5LAU01
2NO+2NC CODE D5LAU02

le = 16 A (resistive loads)
4 A (inductive loads) at 250 Vac.



» Terminal shrouds (2 units - only for 850A)

	A	B	C
TOP	DS-CU38	DS-CU30	DS-CU30
BOTTOM	DS-CU39	DS-CU31	DS-CU38



» Bridging links ^{*(p1)}

A B 850A CODE DS-PI31 (2 units)
C CODE CONSULT

B 1250A CODE DS-PI3D (2 units)

^{*(p1)} To comply with the operation and electrical features, the bridging links must be assembled to the switch. Please consult.

» Shafts

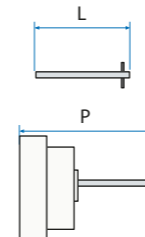
Standard shaft included ^{*(e1)}

L (mm)	P (mm)	CODE
186	145... 242	

Shaft extensions

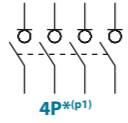
Type 1		CODE
L (mm)	P (mm)	
345	145... 411	DS-EP23

Type 2		CODE
L (mm)	P (mm)	
535	145... 600	DS-EP24



S5 DC Switch - disconnecter for DC current 4P

Size 4
A 1250|1800|2000
1000Vdc



Technical information



According to IEC 60947-1
IEC 60947-3

		1250	1800	2000	
Rated thermal current in ambient at	lth 40° C	A	1250	1800	2000
	50° C	A	1250	1620	1800
	60° C	A	1250	1400	1600
Rated insulation voltage DC20	Ui	V	1500	1500	1500
Rated impulse withstand voltage	Uimp	kV	12	12	12
Rated operational current ^{*(1)} DC21B	Ue				
	le 1000 Vdc	A	1250	1800	2000

		1250	1800	2000
Short - circuit behaviour				
Short - circuit making capacity ^{*(2)}	Icm kA (peak)	60	75	75
Rated short-time withstand current (1sec.)	Icw kA rms	25	50	50
Number of mechanical operations (according to the standards, for other values please consult)	Cycles	3000	3000	3000
Maximum weight (without jumpers)	Kg	20,8	20,8	20,8

^{*(1)} Other voltages and / or utilization categories. Please consult
^{*(2)} Without limiting protective device (short-circuit maintained 50... 100 ms.)

Connection diagram

Connection diagram

A S5-18004PS0

B S5-18004PS0
S5-18002ES0
S5-20002ED0

C S5-18004PS0

Bridging links ^{*(p1)}

Terminal shrouds

CONSULT FOR GROUNDED INSTALLATIONS

Accessories



Direct handle
CODE DS-LI41



External handle included shaft ^{*(e1)}
IP65|UL50E/NEMA 250
Types: 1, 3R, 4, 4X y 12
CODE DS-LA41



External handle without shaft
IP65|UL50E/NEMA 250
Types: 1, 3R, 4, 4X y 12
CODE DS-LA43



Auxiliary contacts
1NO+1NC CODE D5LAU01
2NO+2NC CODE D5LAU02
Ie = 16 A (resistive loads)
4 A (inductive loads) at 250 Vac.

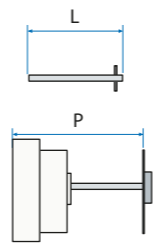


Terminal shrouds (2 units)
A B C
TOP DS-CU48 DS-CU40 DS-CU40
BOTTOM DS-CU49 DS-CU41 DS-CU48



Bridging links ^{*(p1)}
For S5-18004PS0 A B CODE DS-PI41 (2 units)
C CONSULT
For S5-18002ES0 S5-20002ED0 B CODE DS-PI4D (2 units)
C CONSULT

Shafts



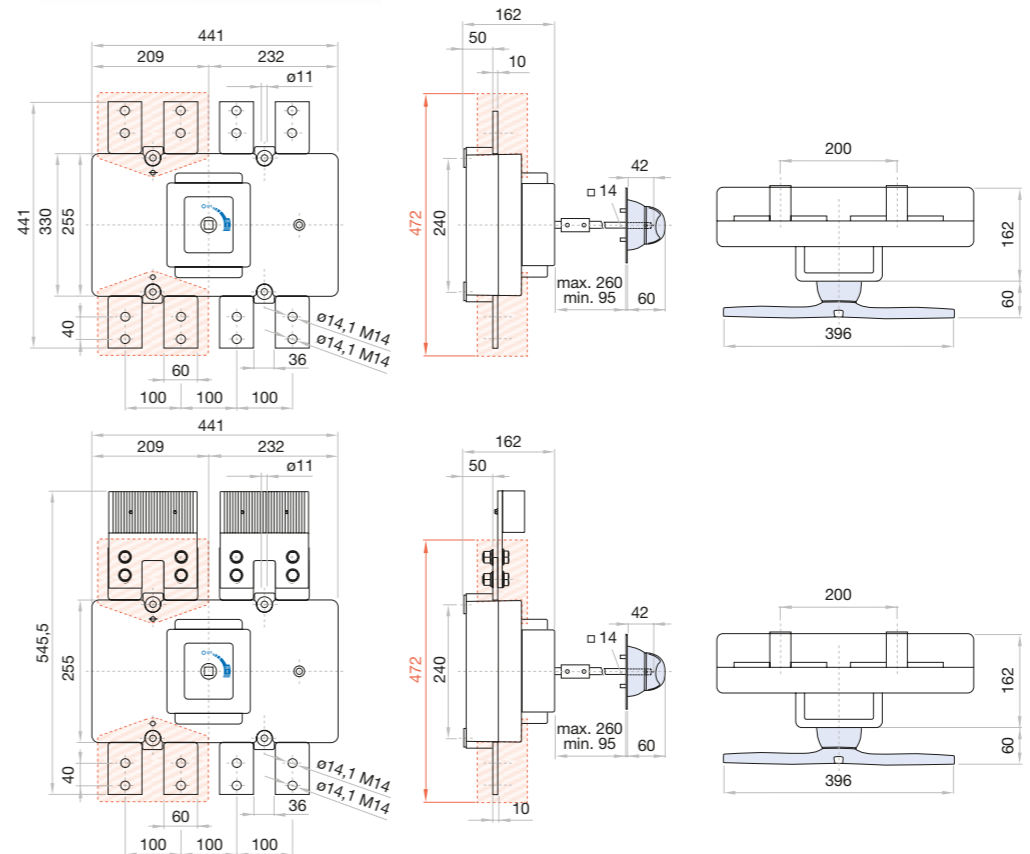
Standard shaft included ^{*(e1)}
L (mm) P (mm)
239 235... 400

Shaft extensions

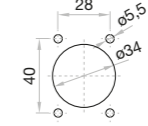
Type 1
L (mm) P (mm) CODE
485 235... 686 DS-EP44
Type 2
L (mm) P (mm) CODE
635 235... 836 DS-EP45

^{*(p1)} To meet the operation and electrical features, the product installed must incorporate these bridging links. Please consult.

Dimensions (mm)

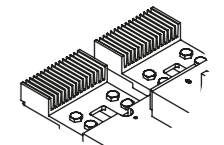
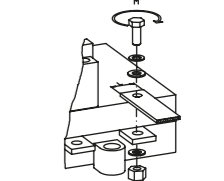


Door drilling for external handle



1250 A

1800 A
2000 A



H max (Cu)	L max (Cu)	M
2x7	80	M14 55



S5N DC Switch - disconnecter for DC current 4P+4P

Size 5
A 2000|2500|3150

1000Vdc



- CODE-2000A **S5N20002ES0**
- CODE-2500A **S5N25002ES0**
- CODE-3150A **S5N31502ES0**

Technical information



According to IEC 60947-1
IEC 60947-3

		2000	2500	3150
Rated thermal current in ambient at	lth 40° C	A 2000	2500	3150
	50° C	A 2000	2500	2850
	60° C	A 2000	2500	2500
Rated insulation voltage DC20	Ui	V 1500	1500	1500
Rated impulse withstand voltage	Uimp	kV 12	12	12
Rated operational current DC21B ^{*(1)}	le 1000 Vdc	A 2000	2500	3150

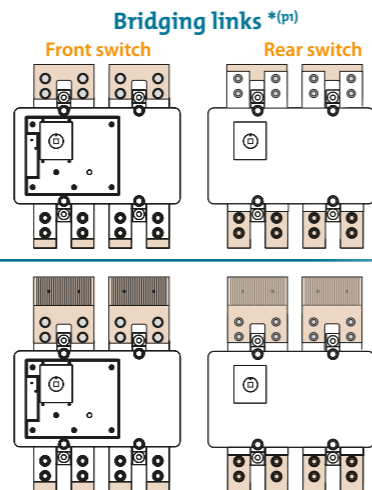
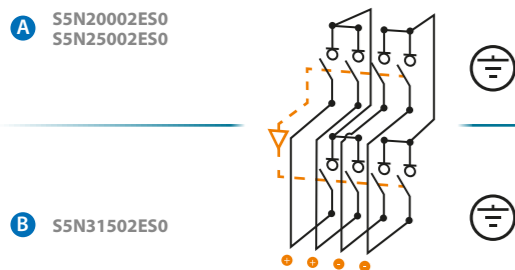
^{*(1)} Other voltages and / or utilization categories. Please consult
^{*(2)} Without limiting protective device (short-circuit maintained 50... 100 ms.)

Short - circuit behaviour			
Short - circuit making capacity ^{*(2)}	lcm	kA (peak)	60
Rated short-time withstand current (1sec.)	lcw	kA rms	50
Mechanical features			
Number of mechanical operations (according to the standards, for other values please consult)	Cycles		600
Maximum weight (without bridging links)	Kg		55

CONSULT FOR GROUNDED INSTALLATIONS

Connection diagram

Connection diagram



MOTORIZED KIT AVAILABLE

 PLEASE CONSULT.

Accessories



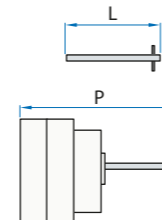
» Direct handle
CODE DS-LI41



» External handle included shaft ^{*(e1)}
IP65
CODE DS-LA41



» External handle without shaft
IP65
CODE DS-LA43



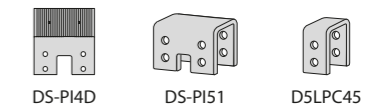
» Shafts
Standard shaft included ^{*(e1)}
L (mm) | P (mm)
239 | 420 ... 580



» Auxiliary contacts
1NO+1NC CODE D5LAU01
2NO+2NC CODE D5LAU02
le = 16 A (resistive loads)
4 A (inductive loads) at 250 Vac

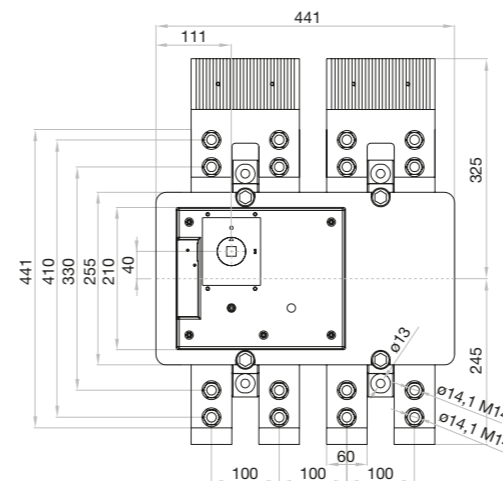
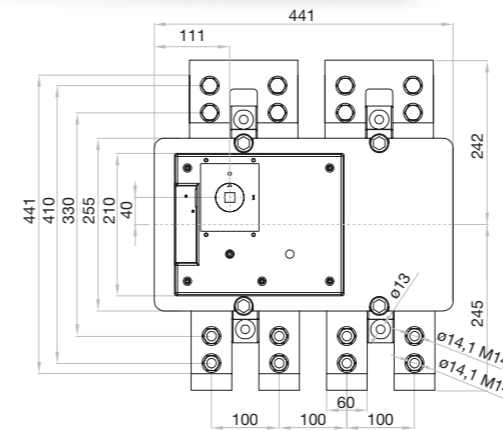


» Bridging links ^{*(p1)}
A 2000A CODE DS-PI51 (2 units) + D5LPC45 (4 units)
2500A CODE DS-PI51 (2 units) + D5LPC45 (4 units)
B 3150A CODE x2 DS-PI4D (2 units) + x2 D5LPC45 (4 units)

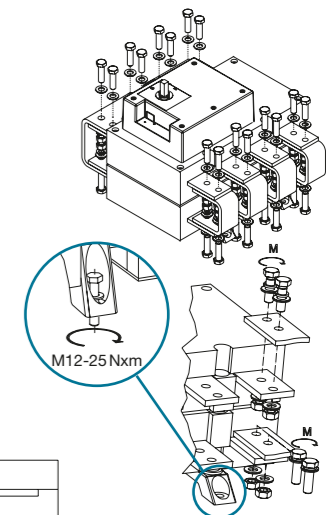
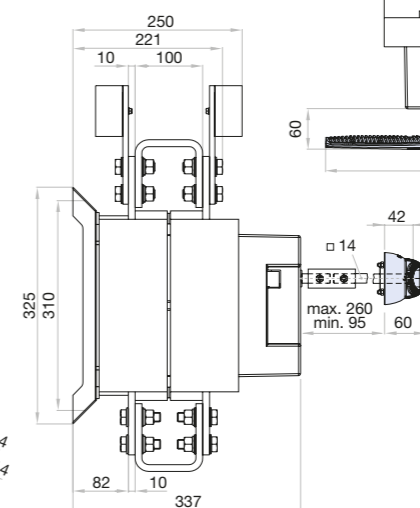
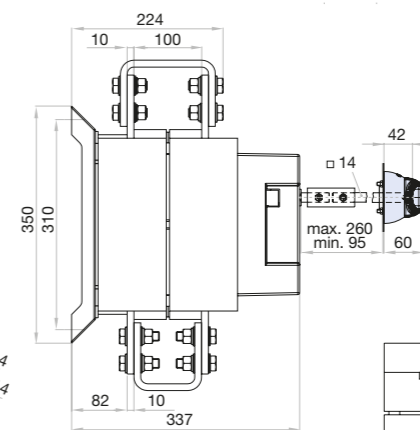
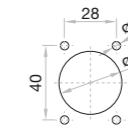


^{*(p1)} To comply with the operation and electrical features, the bridging links must be assembled to the switch. Please consult

Dimensions (mm)



Door drilling for external handle



	H max (Cu) mm	L max (Cu) mm	T M	M Nxmm
2000 A	2x10	80	M14	55
2500 A	4x10	80	M14	55
3150 A				

