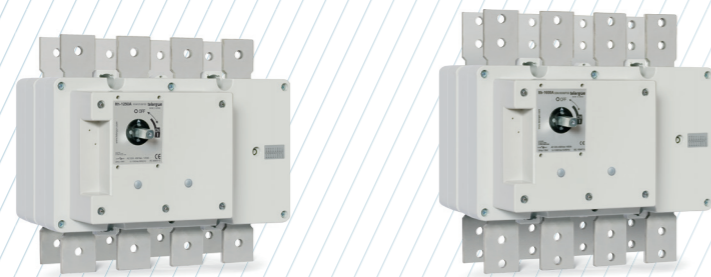


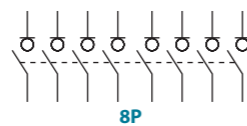
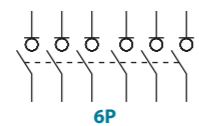
S5N AC Switch - disconnecter base mounting 6P - 8P

Size 4

A 1250|1600|1800|2000



6P	CODE-1250A	S5N12506PS0	CODE-1600A	S5N16006PS0	CODE-1800A	S5N18006PS0	CODE-2000A	S5N20006PD0
8P		S5N12508PS0		S5N16008PS0		S5N18008PS0		S5N20008PD0



Accessories



Direct handle

CODE DS-LI41



External handle included shaft^{*(e1)}

IP65
CODE DS-LA41



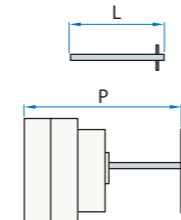
External handle without shaft

IP65
CODE DS-LA43



Emergency external handle included shaft^{*(e1)}

IP65
CODE DS-LR41



Shafts

Standard shaft included^{*(e1)}

L (mm)	P (mm)
239	420 ... 580



Auxiliary contacts

1NO+1NC CODE DS-LA101
2NO+2NC CODE DS-LA102

I_e = 16 A (resistive loads)
4 A (inductive loads) at 250 Vac.

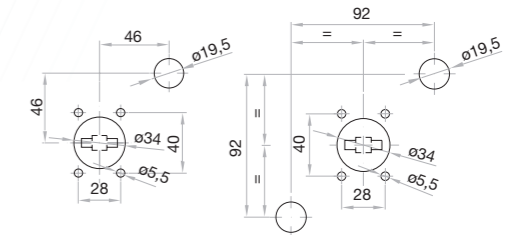


Safety key lock devices

Simple CODE DS-CB41
Double CODE DS-CF41

For external handle, lock the handle by means of a key in position "OFF" (under request, in "ON"), the key can only be removed with the handle locked

Door drilling for handle and key lock device
Simple Double



Technical information



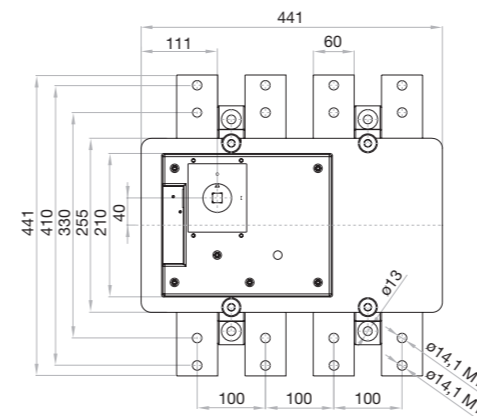
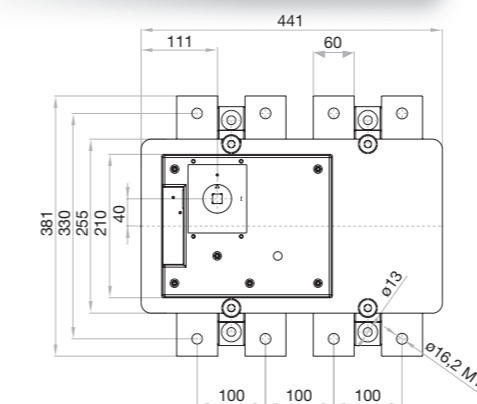
According to IEC 60947-3

		1250 1600 1800 2000				
Rated thermal current in ambient at	I _{th} 40 °C	A	1250	1600	1800	2000
	50 °C	A	1250	1600	1800	1800
	60 °C	A	1000	1600	1600	1600
Rated insulation voltage	U _i	V	1000	1000	1000	1000
Rated impulse withstand voltage	U _{imp}	kV	12	12	12	12
AC rated operational current ^{*(1)}	U _e 400V AC21B	A	1250	1600	1800	2000
	U _e 400V AC22B	A	1250	1600	1800	2000

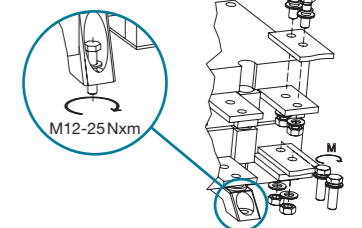
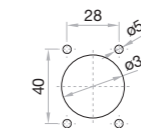
^{*(1)} Other voltages and / or utilization categories. Please consult
^{*(2)} Without limiting protective device (short-circuit maintained 50... 100 ms.)

		1250 1600 1800 2000				
Rated breaking capacity	400V AC22	A	3750	4800	5400	6000
Rated making capacity	400V AC22	A	3750	4800	5400	6000
Short - circuit behaviour						
Rated short-circuit making capacity ^{*(2)}	I _{cm}	kA (peak)	60	60	60	60
Rated short-time withstand current (1sec.)	I _{cw}	kA rms	25	50	50	50
Mechanical features						
Number of mechanical operations (according to the standards, for other values please consult)		Cycles	600	600	600	600
Maximum weight 6P		Kg	42,9	42,9	42,9	42,9
Maximum weight 8P		Kg	47,3	47,3	47,3	47,3

Dimensions (mm)



Door drilling for external handle



H max (Cu) mm	L max (Cu) mm	T	M
1250 A	2x10	80	M16 80
1600 A	2x10	80	M14 55
1800 A	2x10	80	M14 55
2000 A	2x10	80	M14 55

