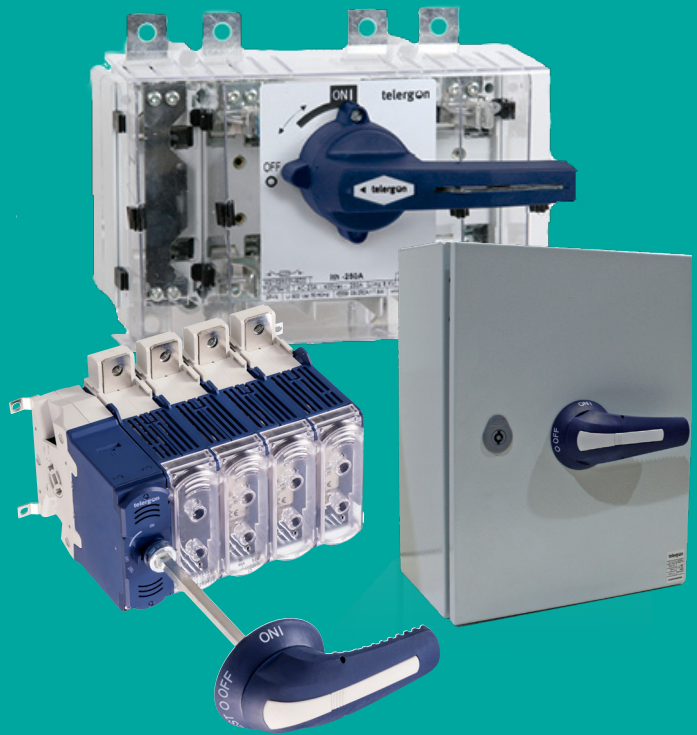


**telergon**  
gorlan



## M3 & M21 SERIES Fuse switch-disconnectors



[www.telergon.com](http://www.telergon.com)



**gorlan**

# Fuse switch-disconnectors

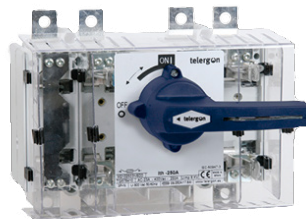
## What is a fuse switch-disconnectors?

A combination of a switch to disconnect the circuit and a fuse to shut the circuit off the event of a problem. When installing or maintaining equipment on the circuit, or the circuit itself, the switch provides a method to manually shut off the power.

This load break switches have a fuse provision in the switch and enclosure assembly, enabling you to open and close the circuit while providing overcurrent and short-circuit protection.



**M3 SERIES**  
32A-250A  
Compact solution



**M21 SERIES**  
400A-800A



**CIF SERIES**  
Enclosed solutions  
(metal & polyester)



ON LOAD make and break applications.  
Double break contacts



Finger protected switches and shrouds



Test position available up to 250 A.



Padlockable panel handle in OFF position.  
Defeatable panel handle.



Fixed and detachable neutral versions.



Up to 200 kA short circuit rating.



Cage connection up to 100A  
Lug connection up to 800A.



Front or lateral operation (only in M3 series).  
Easy to install.



Available for NFC, DIN, BS and Class J fuses.



IP65 / NEMA 4X handles.

## APPLICATIONS

Temporary power distribution panels



HVAC



Motor control centers



Power electronics



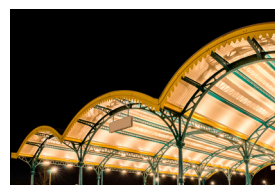
Photovoltaics (SSVT)



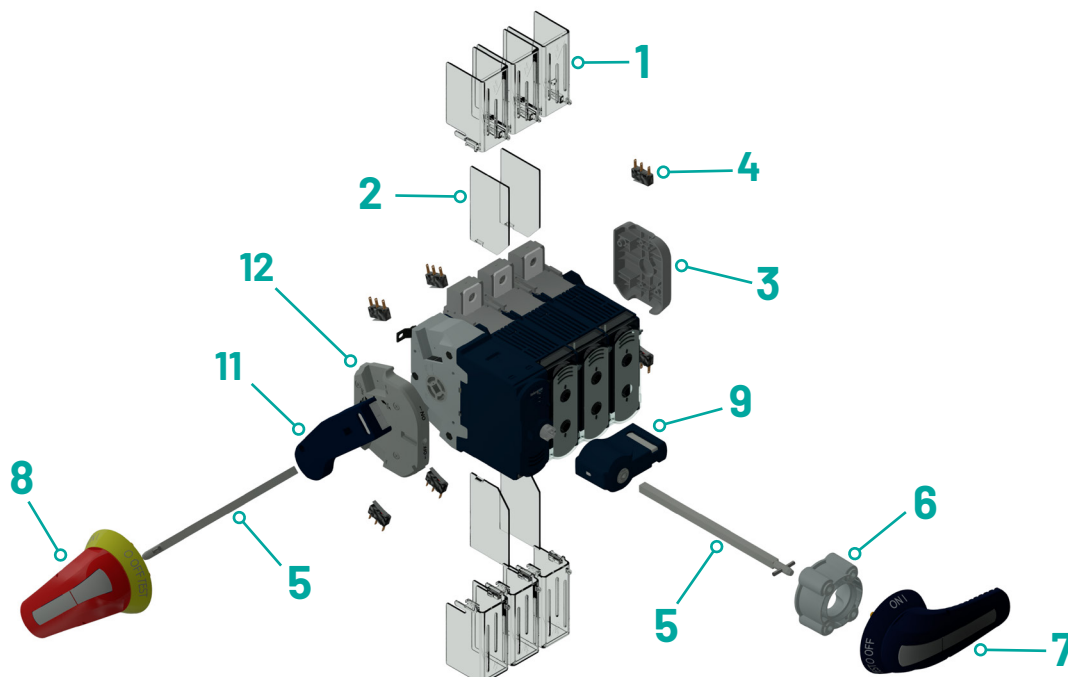
Switchboards



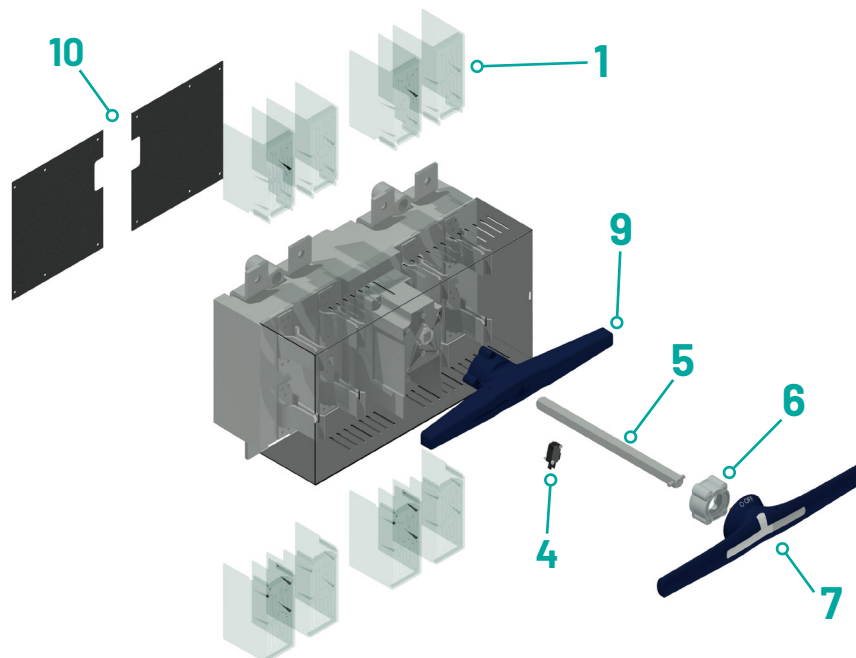
Festival sites



## SERIES M3



## SERIES M21



- |                                      |   |  |
|--------------------------------------|---|--|
| <b>1</b> Terminal shroud             | <b>5</b> Shaft extension                | <b>9</b> Direct handle                 |
| <b>2</b> Phase barrier               | <b>6</b> Shaft guide                    | <b>10</b> Rear protective plate        |
| <b>3</b> Simultaneous contact holder | <b>7</b> External handle                | <b>11</b> Side operation direct handle |
| <b>4</b> Auxiliary contact           | <b>8</b> Side operation external handle | <b>12</b> Front contact holder         |

## ► M3 SERIES | 2P, 3P, 3P+N & 3P+DN | 32A-250A



| Amp. | Fuse     | Size          | Connection    | 2P            | 3P            | 3P+N <sup>*(1)</sup> | 3P+DN<br>(fixed detachable neutral) | Front operation |           |                                     |             |         |
|------|----------|---------------|---------------|---------------|---------------|----------------------|-------------------------------------|-----------------|-----------|-------------------------------------|-------------|---------|
|      |          |               |               |               |               |                      |                                     | Direct handle   |           | External handle<br>(shaft included) |             |         |
|      |          |               |               |               |               |                      |                                     | Code            | L<br>(mm) | ON-OFF                              | ON-OFF-TEST |         |
|      |          |               |               |               |               |                      |                                     |                 |           | Code                                | Code        |         |
| 32   | BS-A1-A2 | 00            |               | M3-00322PBB10 | M3-00323PBB10 | M3-00323NBB10        | M3-00323DBB10                       | DM3SIB1         | 177       |                                     | DM3SAB2     | DM3SAB1 |
| 50   | 14x51    |               |               | M3-00502PBC20 | M3-00503PBC20 | M3-00503NBC20        | M3-00503DBC20                       |                 |           |                                     |             |         |
| 63   | BS-A2-A3 |               |               | M3-00632PBB20 | M3-00633PBB20 | M3-00633NBB20        | M3-00633DBB20                       |                 |           |                                     |             |         |
|      | NH000    |               |               | M3-00632PBD20 | M3-00633PBD20 | M3-00633NBD20        | M3-00633DBD20                       |                 |           |                                     |             |         |
| 80   | BS-A3    |               |               | M3-00802PBB30 | M3-00803PBB30 | M3-00803NBB30        | M3-00803DBB30                       |                 |           |                                     |             |         |
| 100  | 22x58    |               |               | M3-01002PBC30 | M3-01003PBC30 | M3-01003NBC30        | M3-01003DBC30                       |                 |           |                                     |             |         |
| 100  | NH000    | M3-01002PBD30 | M3-01003PBD30 | M3-01003NBD30 | M3-01003DBD30 |                      |                                     |                 |           |                                     |             |         |
|      | BS-A3    | M3-01002PTB30 | M3-01003PTB30 | M3-01003NTB30 | M3-01003DTB30 |                      |                                     |                 |           |                                     |             |         |
| 125  | BS-A3    | M3-01252PTB30 | M3-01253PTB30 | M3-01253NTB30 | M3-01253DTB30 |                      |                                     |                 |           |                                     |             |         |
|      | 22x58    | M3-01252PTC30 | M3-01253PTC30 | M3-01253NTC30 | M3-01253DTC30 |                      |                                     |                 |           |                                     |             |         |
| 160  | NH00     | M3-01602PTD40 | M3-01603PTD40 | M3-01603NTD40 | M3-01603DTD40 |                      |                                     |                 |           |                                     |             |         |
|      | BS-A4    | M3-01602PSB50 | M3-01603PSB50 | M3-01603NSB50 | M3-01603DSB50 |                      |                                     |                 |           |                                     |             |         |
| 160  | NH0      | M3-01602PSD90 | M3-01603PSD90 | M3-01603NSD90 | M3-01603PSD90 |                      |                                     |                 |           |                                     |             |         |
|      | BS-B1-B2 | M3-02002PSB60 | M3-02003PSB60 | M3-02003NSB60 | M3-02003DSB60 |                      |                                     |                 |           |                                     |             |         |
| 200  | NH1      | M3-02502PSD50 | M3-02503PSD50 | M3-02503NSD50 | M3-02503DSD50 |                      |                                     |                 |           |                                     |             |         |
| 250  | BS-B3    | M3-02502PSB80 | M3-02503PSB80 | M3-02503NSB80 | M3-02503DSB80 |                      |                                     |                 |           |                                     |             |         |
|      |          |               |               |               |               |                      |                                     |                 |           |                                     |             |         |

## ► M21 SERIES | 3P, 3P+N & 3P+FN | 400A-800A

| Amp. | Fuse         | Size | Connection | 3P            | 3P+N <sup>*(1)</sup> | 3P+FN         | Manual handle |                                     |         |
|------|--------------|------|------------|---------------|----------------------|---------------|---------------|-------------------------------------|---------|
|      |              |      |            |               |                      |               | Direct handle | External handle<br>(shaft included) |         |
|      |              |      |            |               |                      |               | Code          | Code                                |         |
| 400  | NH2          | 2    |            | M2104003PSD20 | M2104003NSD20        | M2104003FSD20 | DM2SI21       |                                     | DS-LA22 |
| 400  | BSB1...BSB4  |      |            | M2104003PSB50 | M2104003NSB50        | M2104003FSB50 |               |                                     | DS-LR22 |
| 630  | NH3          | 3    |            | M2106303PSD30 | M2106303NSD30        | M2106303FSD30 | DM2SI31       |                                     | DS-LA31 |
| 800  | NH3          |      |            | M2108003PSD30 | M2108003NSD30        | M2108003FSD30 |               |                                     | DS-LR31 |
| 630  | BSC1... BSC2 |      |            | M2106303PSB70 | M2106303NSB70        | M2106303FSB70 |               |                                     |         |
| 800  | BSC1... BSC3 |      |            | M2108003PSB80 | M2108003NSB80        | M2108003FSB80 |               |                                     |         |

<sup>\*(1)</sup> Neutral pole early make & late break. Also available 4P.

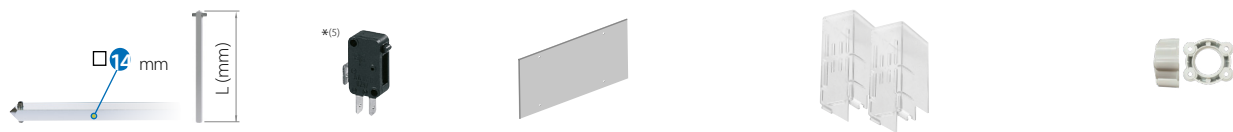
<sup>\*(2)</sup> With the side handle code, the auxiliary contacts holder is included (DM3AMB1/DM3AM11), as it is required for installation.

<sup>\*(3)</sup> To be used as signaling or control contacts. I<sub>e</sub> = 0.1A at 125 VAC and 0.1A at 30 VDC (resistive loads) (M3) This code includes just an individual auxiliary contact (1 pc per package), so it is necessary to order as many pcs as it would be needed of any type of contact.

<sup>\*(4)</sup> One set for input or output.



| Size | Side operation                |                                  |         |                         | Auxiliary contacts <sup>*(3)</sup><br>(1 unit) | Auxiliary contacts holder <sup>*(7)</sup> |                       | Shaft extensions |                         | Phase barriers          | Terminal shrouds <sup>*(4)</sup> |         | Shaft guide |      |
|------|-------------------------------|----------------------------------|---------|-------------------------|--|---|-----------------------|------------------|-------------------------|-------------------------|----------------------------------|---------|-------------|------|
|      | Direct handle <sup>*(2)</sup> | External handle (shaft included) |         |                         |  | Early make contacts                       | Simultaneous contacts | L (mm)           | Code                    |                         | P                                | Code    |             | Code |
|      |                               | Code                             | L (mm)  | ON-OFF<br>Code          |  |   |                       |                  |                         |                         |                                  |         |             |      |
| 00   | DM3SSB1                       | 177                              | DM3SBB2 | DM3SBB1                 | DM3AUB1  | DM3AMB1                                   | DM3ASB1               | 250              | DM3EP01                 | -                       | -                                | -       | DS-EC00     |      |
|      |                               |                                  | DM3SEB2 | DM3SEB1                 |  |   |                       | 387              | DM3EP02                 |                         |                                  |         |             |      |
| 0    | DM3SSB1                       | 177                              | DM3SBB2 | DM3SBB1                 | DM3AUB1  | DM3AMB1                                   | DM3ASB1               | 250              | DM3EP01                 | 2P                      | DM3SF01 <sup>*(6)</sup>          | DM3CU01 | DS-EC00     |      |
|      |                               |                                  | 3P      | DM3SF02 <sup>*(6)</sup> |  |   |                       |                  |                         | DM3CU02                 |                                  |         |             |      |
|      |                               |                                  | 387     | DM3EP02                 |  |   |                       | 3P+N             | DM3SF03 <sup>*(6)</sup> | DM3CU03                 |                                  |         |             |      |
|      |                               |                                  |         |                         |  |   |                       | DN               | -                       | DM3CU04 <sup>*(6)</sup> |                                  |         |             |      |
| 1    | DM3SS11                       | 227                              | DM3SB12 | DM3SB11                 | DM3AUB1  | DM3AM11                                   | DM3AS11               | 375              | DM3EP11                 | 2P                      | DM3SF11                          | DM3CU11 | DS-EC00     |      |
|      |                               |                                  | 3P      | DM3SF12                 |  |   |                       |                  |                         | DM3CU12                 |                                  |         |             |      |
|      |                               |                                  | 536     | DM3EP12                 |  |   |                       | 3P+N             | DM3SF13                 | DM3CU13                 |                                  |         |             |      |
|      |                               |                                  |         |                         |  |   |                       | DN               | -                       | DM3CU14 <sup>*(6)</sup> |                                  |         |             |      |



| Size | Shaft extensions |        |         | Auxiliary contacts <sup>*(5)</sup> |         | Rear protective plate | Terminal shrouds <sup>*(4)</sup> |          |           | Shaft guide |                     |
|------|------------------|--------|---------|------------------------------------|---------|-----------------------|----------------------------------|----------|-----------|-------------|---------------------|
|      | □                | L (mm) | Code    | 1NO+1NC                            | 2NO+2NC |                       | Code                             | 3P input | 3P output |             | 3P+N input / output |
|      |                  |        |         | Code                               | Code    |                       |                                  | Code     | Code      |             | Code                |
| 2    | 14               | 345    | DS-EP23 | D5LAU01                            | D5LAU02 | Code                  | 3P                               | DM2CU21  | DM2CU22   | DM2CU23     | DS-EC00             |
|      |                  |        |         |                                    |         |                       | DM2PP21                          |          |           |             |                     |
| 3    | 14               | 345    | DS-EP23 | D5LAU01                            | D5LAU02 | Code                  | 3P+N                             | DM2CU31  | DM2CU32   | DM2CU33     | DS-EC00             |
|      |                  |        |         |                                    |         |                       | DM2PP22                          |          |           |             |                     |
|      |                  |        |         |                                    |         |                       | DM2PP31                          |          |           |             |                     |
|      |                  |        |         |                                    |         |                       | 3P+N                             |          |           |             |                     |
|      |                  |        |         |                                    |         |                       | DM2PP32                          |          |           |             |                     |

<sup>\*(5)</sup> To be used as signaling or control contacts – I<sub>e</sub> = 16A (resistive loads) 4A (inductive loads) at 250 Vac. (M21)

<sup>\*(6)</sup> In 22x58 and BS size the device includes directly the phase barriers.

<sup>\*(7)</sup> With the switch 1NO+1NC early make contact (ON-OFF position) and 1NO+1NL early make contact (TEST position) can be fixed. Maximum capacity with holders:  
 3NO+3NC for OFF position (2 early make contacts and 1 simultaneous)  
 2NO+2NC for TEST position (2 early make contacts)

## TECHNICAL DATA



| IEC-EN-UNE 60947-1<br>IEC-EN-UNE 60947-3 |  |                          |        | 00       |           |                   |       |                    | 0     |                           |       | 1           |          | 2            | 3           |                    |                    |
|--|--|--------------------------|--------|----------|-----------|-------------------|-------|--------------------|-------|---------------------------|-------|-------------|----------|--------------|-------------|--------------------|--------------------|
|  |  |                          |        | 32 A     | 50 A      | 63 A              | 80 A  | 100 A              | 100 A | 125 A                     | 160 A | 160 A       | 200 A    | 250 A        | 400 A       | 630 A              | 800 A              |
| Fuse type                                |  |                          |        | BS-A1-A2 | NFC 14x51 | NH000<br>BS-A2-A3 | BS-A3 | NH000<br>NFC 22x58 | BS A3 | NH00   BS-A3<br>NFC 22x58 | NH00  | NH0   BS-A4 | BS-B1-B2 | NH1<br>BS-B3 | NH2<br>BSB4 | NH3<br>BSCT...BSC2 | NH3<br>BSCT...BSC3 |
| Electrical features                      | Thermal current in ambient at 35°C (and temporarily 40 °C) <sup>*(1)</sup>   | I <sub>th</sub>          | A      | 32       | 50        | 63                | 80    | 100                | 100   | 125                       | 160   | 160         | 200      | 250          | 400         | 630                | 800                |
|  | Rated insulation voltage   | U <sub>i</sub>           | Vac    | 1.000    |           |                   |       |                    | 1.000 | 1.000                     | 1.000 |             | 1.000    | 1.000        | 1.000       |                    |                    |
|  | Rated impulse withstand voltage  | U <sub>imp</sub>         | kV     | 8        |           |                   |       |                    | 8     | 8                         | 12    |             | 12       | 12           | 12          |                    |                    |
|  | AC rated operational current <sup>*(2)</sup><br>(Rated frequency 50 / 60 Hz) | Ue 415 V AC21A           | A      | 32       | 50        | 63                | 80    | 100                | 100   | 125                       | 160   | 160         | 200      | 250          | 400         | 630                | 800                |
|  |  | Ue 415 V AC22A           | A      | 32       | 50        | 63                | 80    | 100                | 100   | 125                       | 160   | 160         | 200      | 250          | 400         | 630                | 800                |
|  |  | Ue 415 V AC23A/<br>AC23B | A      | 32       | 50        | 63                | 80    | 80                 | 100   | 125                       | 160*  | 160         | 200      | 250          | 400         | 630                | 630                |
|  | Power losses in fuses <sup>*(3)</sup>  | NH/DIN                   | W      | -        | -         | 5,8               | -     | 6,6                | -     | 9                         | 11,2  | 12,9        | -        | 17           | 30          | 48                 | 57                 |
|  |  | BS                       | W      | 2,9      | -         | 5,6               | 6,5   | -                  | 8,5   | 11,3                      | -     | 14          | 14       | 18           | 29          | 44                 | 63                 |
| NFC                                      |  | W                        | -      | 5        | -         | -                 | 9     | -                  | 11,4  | -                         | -     | -           | -        | -            | -           | -                  |                    |
| Rated breaking capacity                  | 400 V; cos φ = 0,35÷0,45   | A                        | 256    | 400      | 504       | 640               | 640   | 800                | 1.000 | 1.280                     | 1.280 | 1.600       | 2.000    | 3.200        | 5.040       | 5.040              |                    |
| Rated making capacity                    | 400 V; cos φ = 0,45  | A                        | 320    | 500      | 630       | 800               | 800   | 1.000              | 1.250 | 1.600                     | 1.600 | 2.000       | 2.500    | 4.000        | 6.300       | 6.300              |                    |
| Short circuit behaviour                  | Conditional short-circuit current <sup>*(4)</sup>                            | NH/DIN/NFC               | kA rms | -        | 100       | 100               | -     | 100                | -     | 100                       | 100   | -           | -        | 100          | 100         | 100                | 100                |
|  |  | BS                       | kA rms | 80       | -         | 80                | 80    | -                  | 80    | 80                        | -     | 80          | 80       | 80           | 100         | 100                | 100                |
|  | Maximum cut - off current  | kA (peak)                | 4,2    | 9,5      | 10,5      | 14                | 14    | 16,5               | 16,5  | 19,5                      | 29    | 29          | 32       | 43           | 60,8        | 60,8               |                    |
| Mechanical data                          | Durability, number of operating cycles <sup>*(5)</sup>                       | Cycles                   | 10.000 |          |           |                   |       | 8.000              |       |                           | 8.000 |             | 5.000    |              | 3.000       |                    |                    |
|  | Maximum weight   | 2P                       | kg     | 0,6      | 0,6       | 0,6               | 0,7   | 0,7                | 1     | 1                         | 2,6   |             | -        | -            | -           |                    |                    |
|  |  | 3P                       | kg     | 0,85     | 0,85      | 0,85              | 1     | 1                  | 1,3   | 1,3                       | 3,4   |             | 6,6      | 13           | 13          |                    |                    |
|  |  | 3P+N                     | kg     | 1,1      | 1,1       | 1,1               | 1,3   | 1,3                | 1,6   | 1,6                       | 4,2   |             | 8        | 15           | 15          |                    |                    |

\*Category of operation B.

<sup>\*(1)</sup> According to IEC 60947-1, section 7.1.1. Minimum ambient temperature -5°C.

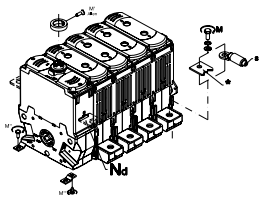
<sup>\*(2)</sup> Other voltages and / or utilization categories. Please consult.

<sup>\*(3)</sup> Power dissipation values of fuse - links used in type tests. Please consult for fuse - links with higher power dissipation.

<sup>\*(4)</sup> With a protective device limiting the cut - off current and the joule integral to the indicated values.

<sup>\*(5)</sup> According to the standards, for other values please consult.

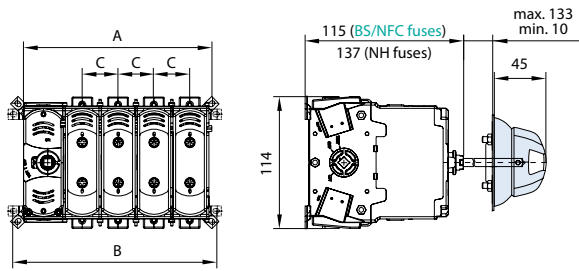
## CONNECTION CAPACITY



| Size | I <sub>th</sub> | S min. (Cu)     |          | S max. (Cu)     |       | H max (Cu) |     | L max (Cu) |        | T       | M   |        |      |
|------|-----------------|-----------------|----------|-----------------|-------|------------|-----|------------|--------|---------|-----|--------|------|
|      |                 | mm <sup>2</sup> | AWG      | mm <sup>2</sup> | AWG   | mm         | In  | mm         | in     |         | Nxm | lbf-in |      |
| M3   | 00              | 32A             | 6        | 10              | 1x25  | 1x4        | -   | -          | -      | -       | -   | 2      | 17.7 |
|      |                 | 50A             | 10       | 8               |       |            |     |            |        |         |     |        |      |
|      |                 | 63A             | 16       | 6               |       |            |     |            |        |         |     |        |      |
|      |                 | 80A             | 25       | 4               |       |            |     |            |        |         |     |        |      |
|      |                 | 100A            | 35       | 3               | 50    | 1          |     |            |        |         |     |        |      |
|      | 0               | 100A            | 35       | 3               | 70    | 00         | 3   | 1/8        | 25     | 1       | M8  | 6      | 53   |
|      |                 | 125A            | 50       | 1               |       |            |     |            |        |         |     |        |      |
| 1    | 160A            | 70              | 00       | 185             | 350   | 7          | 3/8 | 30         | 1 3/16 | M10     | 18  | 159    |      |
|      | 200A            | 95              | 000      |                 |       |            |     |            |        |         |     |        |      |
|      | 250A            | 120             | 250 kmil |                 |       |            |     |            |        |         |     |        |      |
| M21  | 2               | 400A            | 240      | 500             | 240   | 500        | 6   | 15/64      | 40     | 1 37/64 | M10 | 24     | 212  |
|      |                 | 630A            | 2x185    | 2x400           | 2x185 | 2x400      |     |            |        |         |     |        |      |
|      | 800A            | 2x240           | 2x500    | 2x240           | 2x500 |            |     |            |        |         |     |        |      |

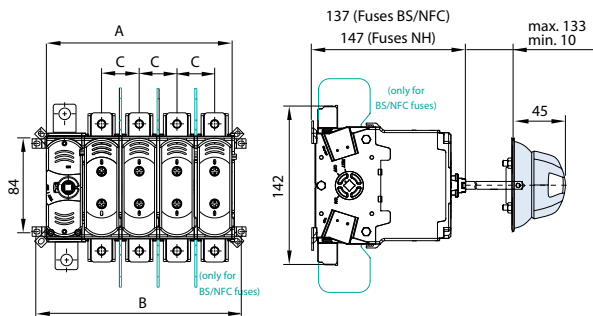
## ► DIMENSIONAL DRAWINGS (mm)

**M3  
00**



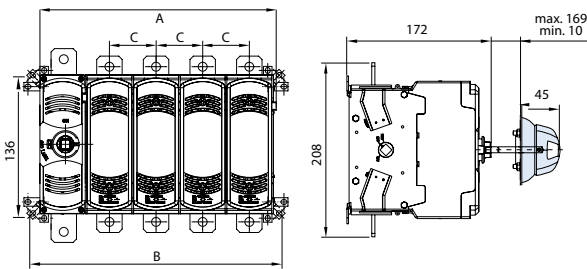
|           |      | A   |     |      | B   |     |      | C  |
|-----------|------|-----|-----|------|-----|-----|------|----|
|           |      | 2P  | 3P  | 3P+N | 2P  | 3P  | 3P+N |    |
| NH        | 32A  |     |     |      |     |     |      |    |
|           | 50A  | 93  | 120 | 147  | 106 | 133 | 160  | 27 |
|           | 63A  |     |     |      |     |     |      |    |
| BS<br>NFC | 80A  | 101 | 132 | 163  | 114 | 145 | 176  | 31 |
|           | 100A |     |     |      |     |     |      |    |

**M3  
0**



|           |      | A   |     |      | B   |     |      | C  |
|-----------|------|-----|-----|------|-----|-----|------|----|
|           |      | 2P  | 3P  | 3P+N | 2P  | 3P  | 3P+N |    |
| NH        | 125A |     |     |      |     |     |      |    |
|           | 160A | 109 | 144 | 179  | 123 | 158 | 193  | 35 |
| BS<br>NFC | 100A |     |     |      |     |     |      |    |
|           | 125A | 110 | 146 | 182  | 124 | 160 | 196  | 36 |
|           | 160A |     |     |      |     |     |      |    |

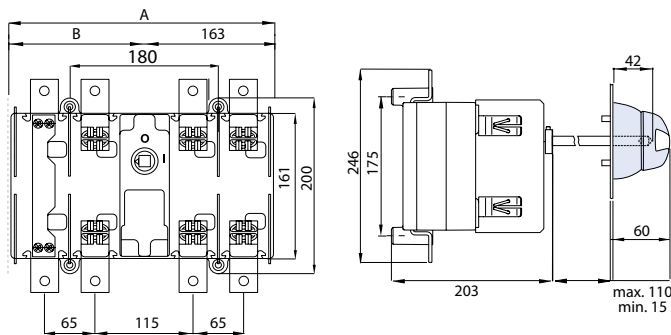
**M3  
1**



|          |      | A   |     |      | B   |     |      | C  |
|----------|------|-----|-----|------|-----|-----|------|----|
|          |      | 2P  | 3P  | 3P+N | 2P  | 3P  | 3P+N |    |
| BS<br>NH | 160A |     |     |      |     |     |      |    |
|          | 200A | 168 | 223 | 278  | 192 | 247 | 302  | 55 |
|          | 250A |     |     |      |     |     |      |    |

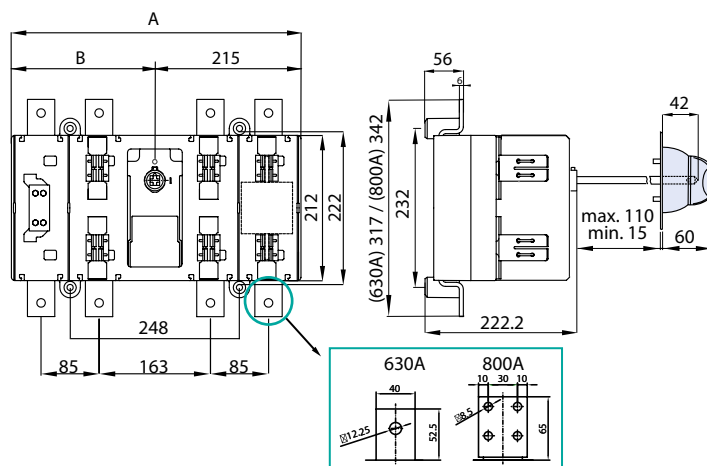
\* 3P+DN dimensions are the same as the 3P

**M21  
2**



|          |      | A   |      | B   |      |
|----------|------|-----|------|-----|------|
|          |      | 3P  | 3P+N | 3P  | 3P+N |
| BS<br>NH | 400A | 274 | 329  | 111 | 166  |

**M21  
3**



|          |      | A   |      | B   |      |
|----------|------|-----|------|-----|------|
|          |      | 3P  | 3P+N | 3P  | 3P+N |
| BS<br>NH | 630A | 381 | 426  | 166 | 211  |
|          | 800A |     |      |     |      |

\* 3P+FN dimensions are the same as the 3P+N

## ► M3 SERIES | 3P, 3P+N & 3P+DN | 30A-200A



| Amp. | Fuse | Size    | Connection | 3P              | 3P+N <sup>*1)</sup> | 3P+DN<br>(detachable neutral) | Front operation |                                     |   |          |           |                     |
|------|------|---------|------------|-----------------|---------------------|-------------------------------|-----------------|-------------------------------------|---|----------|-----------|---------------------|
|      |      |         |            |                 |                     |                               | Direct handle   | External handle<br>(shaft included) |   |          |           |                     |
|      |      |         |            |                 |                     |                               |                 | Code                                | L | Standard | Emergency | ON-OFF TEST<br>Code |
|      |      |         |            |                 |                     |                               |                 |                                     |   | Code     | Code      |                     |
| UL   | 30   | J21x57  | 00         | M3-00303PBJ300L | M3-00303NBJ300L     | M3-00303DBJ300L               | DM3SIB1         | 177 (mm)<br>6.96 (inch)             |   | DM3SAB2  | DM3SAB1   |                     |
|      |      |         |            |                 |                     |                               |                 |                                     |   | DM3SRB2  | DM3SRB1   |                     |
|      | 60   | J27x60  | 0          | M3-00603PTJ400L | M3-00603NTJ400L     | M3-00603DTJ400L               | DM3SIB1         | 177 (mm)<br>6.96 (inch)             |   | DM3SAB2  | DM3SAB1   |                     |
|      |      |         |            |                 |                     |                               |                 |                                     |   | DM3SRB2  | DM3SRB1   |                     |
|      | 100  | J29x117 | 1          | M3-01003PSJ500L | M3-01003NSJ500L     | M3-01003DSJ500L               | DM3SI11         | 227 (mm)<br>8.93 (inch)             |   | DM3SA12  | DM3SA11   |                     |
|      |      |         |            |                 |                     |                               |                 |                                     |   | DM3SR12  | DM3SR11   |                     |
|      | 200  | J41x146 |            | M3-02003PSJ600L | M3-02003NSJ600L     | M3-02003DSJ600L               |                 |                                     |   |          |           |                     |

\*1) Neutral pole early make & late break.

\*2) With the side handle code, the auxiliary contacts holder is included (DM3AMB1/DM3AM11), as it is required for installation.

\*3) To be used as signaling or control contacts. Ie = 0.1A at 125 VAC and 0.1A at 30 VDC (resistive loads)

This code includes just an individual auxiliary contact (1 pc per package), so it is necessary to order as many pcs as it would be needed of any type of contact.

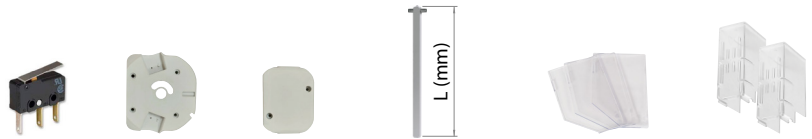
## ► TECHNICAL DATA

| UL98                           |   |         |        | 00      | 0       | 1        |          |         |     |
|--------------------------------|---|---------|--------|---------|---------|----------|----------|---------|-----|
|                                |   |         |        | 30 A    | 60 A    | 100 A    | 200 A    |         |     |
| Fuse type                      |   |         |        | J 21x57 | J 27x60 | J 29x117 | J 41x146 |         |     |
| Ratings                        | Rated Thermal current                   |         |        | A       | 30      | 60       | 100      | 200     |     |
|                                | General purpose amp rating              |         |        | 600Vac  | A       | 30       | 60       | 100     | 200 |
|                                | Max. Operating voltage                  |         |        | Vac     | 600     |          |          |         |     |
|                                | Max. HP rating / motor FLA current      | 3 Phase | 240Vac | HP/A    | 7,5/22  | 15/42    | 30/80    | 50/130  |     |
|                                |   |         | 480Vac | HP/A    | 15/21   | 30/40    | 60/77    | 100/124 |     |
| 600Vac                         |   |         | HP/A   | 20/22   | 50/52   | 75/77    | 125/125  |         |     |
| Short-circuit rating at 600Vac |   |         | kA     | 200     |         |          |          |         |     |
| Mechanical endurance           | Minimum number of mechanical operations |         |        | 10000   |         | 10000    | 8000     |         |     |
|                                | Number of electrical operations         |         |        | 6000    |         |          |          |         |     |

## ► CONNECTION RANGE

| Size | Ith  | Wire range       | Busbar (Max) | Tightening torque |
|------|------|------------------|--------------|-------------------|
|      |      | Flange           | Terminal     |                   |
|      |      | AWG              | mm           | lb-inch           |
| 00   | 30A  | #10-2            | -            | 17.7              |
| 0    | 60A  | #6 ½             | 20           | 53                |
| 1    | 100A | #3AWG-300kcmil   | 30           | 159               |
|      | 200A | #3/0AWG-300kcmil | 30           | 159               |





| Size | Side operation <sup>*(2)</sup> |                |         |                | Auxiliary contacts holder                      |                     |                       | Shaft extensions |         | Phase barriers |         | Terminal shrouds <sup>*(4)</sup> |
|------|--------------------------------|----------------|---------|----------------|--|---------------------|-----------------------|------------------|---------|----------------|---------|----------------------------------|
|      | Direct handle                  | Standard       |         | Emergency      | Auxiliary contacts <sup>*(3)</sup><br>(1 unit) | Early make contacts | Simultaneous contacts | L<br>mm<br>inch  | Code    | P              | Code    | Code                             |
|      |                                | Code           | L       | ON-OFF<br>Code |  | ON-OFF TEST<br>Code | Code                  |                  |         |                |         |                                  |
| 00   | DM3SSB1                        | 177<br>(mm)    | DM3SBB2 | DM3SBB1        | DM3AUB1  | DM3AMB1             | DM3ASB1               | 250<br>9.84      | DM3EP01 | -              | -       | -                                |
|      |                                | 6.96<br>(inch) |         | DM3SEB2        |  |                     |                       | DM3SEB1          |         |                |         |                                  |
| 0    | DM3SSB1                        | 177<br>(mm)    | DM3SBB2 | DM3SBB1        | DM3AUB1  | DM3AMB1             | DM3ASB1               | 250<br>9.84      | DM3EP01 | 3P             | *(5)    | DM3CU020L                        |
|      |                                | 6.96<br>(inch) |         | DM3SEB2        |  |                     |                       | DM3SEB1          |         | 387<br>15.23   |         | DM3EP02                          |
| 1    | DM3SS11                        | 227<br>(mm)    | DM3SB12 | DM3SB11        | DM3AUB1  | DM3AM11             | DM3AS11               | 375<br>14.76     | DM3EP11 | 3P             | DM3SF12 | DM3CU12                          |
|      |                                | 8.93<br>(inch) |         | DM3SE12        |  |                     |                       | DM3SE11          |         | 536<br>21.10   | DM3EP12 | 3P+N                             |
|      |                                |                |         |                |  |                     |                       |                  |         | DN             | -       | DM3CU14 <sup>*(6)</sup>          |

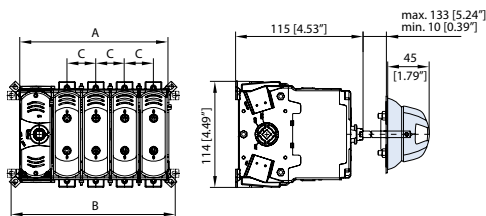
\*<sup>(4)</sup> One set for input or output.

\*<sup>(5)</sup> In this size the device (UL) includes directly the phase barriers.

\*<sup>(6)</sup> This code only includes the terminal shrouds for the detachable neutral pole, it is necessary to order the code for 3P terminal shrouds as well: DM3CU020L or DM3CU12.

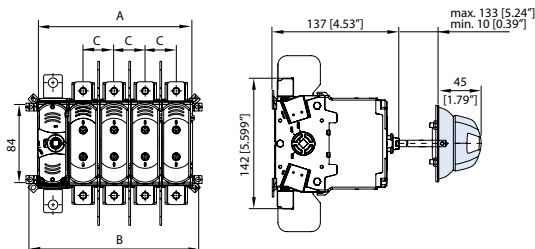
## ► DIMENSIONAL DRAWINGS

M3  
00



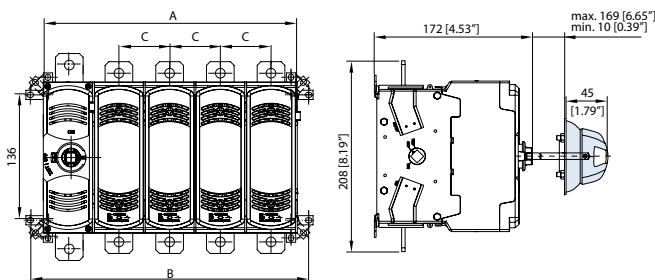
| J | 30A | mm   | A     |       | B     |       | C     |
|---|-----|------|-------|-------|-------|-------|-------|
|   |     |      | 3P    | 3P+N  | 3P    | 3P+N  |       |
|   |     | mm   | 132   | 163   | 145   | 176   | 31    |
|   |     | inch | 5.19" | 6.41" | 5.73" | 6.95" | 1.23" |

M3  
0



| J | 60A | mm   | A     |       | B     |       | C     |
|---|-----|------|-------|-------|-------|-------|-------|
|   |     |      | 3P    | 3P+N  | 3P    | 3P+N  |       |
|   |     | mm   | 146   | 182   | 160   | 196   | 36    |
|   |     | inch | 5.74" | 7.15" | 6.31" | 7.73" | 1.42" |

M3  
1



| J | 100A<br>200A | mm   | A     |        | B     |        | C     |
|---|--------------|------|-------|--------|-------|--------|-------|
|   |              |      | 3P    | 3P+N   | 3P    | 3P+N   |       |
|   |              | mm   | 223   | 278    | 247   | 302    | 55    |
|   |              | inch | 8.81" | 10.97" | 9.72" | 11.89" | 2.57" |

\* 3P+DN dimensions are the same as the 3P

## ► CIF SERIES | METAL SHEET ENCLOSED | 50 A - 800 A



### GENERAL CHARACTERISTICS

- DIN, NFC and BS fuses.
- IP65 protection degree.
- Wall mounting.
- RAL 7035.
- 3P & 3P+N versions.



| Amp. | Fuse  | Size | Connection | Series | 3P              | 3P+N <sup>*(1)</sup> | Enclosure dimensions | Auxiliary contacts <sup>*(2)</sup> | Cable entry | Fixing brackets | Cubrebornes <sup>*(3)</sup> |         |      |
|------|-------|------|------------|--------|-----------------|----------------------|----------------------|------------------------------------|-------------|-----------------|-----------------------------|---------|------|
|      |       |      |            |        | Code            | Code                 |                      | 1NO+1NC                            |             |                 | Code                        | Code    | Code |
|      |       |      |            |        | Code            | Code                 |                      | Code                               |             |                 | Code                        | Code    |      |
| 50   | 14x51 | 00   | ■          | M3     | CIF23C00503PBC2 | CIF23C00503NBC2      | 300x300x200          | DM3AUB1                            | 125x215     | 20105079        | -                           | -       |      |
| 63   | NH000 |      | ■          | M3     | CIF23C00633PBD2 | CIF23C00633NBD2      | 300x300x200          | DM3AUB1                            | 125x215     | 20105079        | -                           | -       |      |
| 100  | 22x58 |      | ■          | M3     | CIF23C01003PBC3 | CIF23C01003NBC3      | 300x300x200          | DM3AUB1                            | 125x215     | 20105079        | -                           | -       |      |
| 100  | NH000 |      | ■          | M3     | CIF23C01003PBD3 | CIF23C01003NBD3      | 300x300x200          | DM3AUB1                            | 125x215     | 20105079        | -                           | -       |      |
| 125  | 22x58 | 0    | ▣          | M3     | CIF23C01253PTC3 | CIF23C01253NTC3      | 400x400x200          | DM3AUB1                            | 125x285     | 20105079        | DM3CU02                     | DM3CU03 |      |
| 125  | NH00  |      | ▣          | M3     | CIF23C01253PTD4 | CIF23C01253NTD4      | 400x400x200          | DM3AUB1                            | 125x285     | 20105079        | DM3CU02                     | DM3CU03 |      |
| 160  | NH00  |      | ▣          | M3     | CIF23C01603PTD4 | CIF23C01603NTD4      | 400x400x200          | DM3AUB1                            | 125x285     | 20105079        | DM3CU02                     | DM3CU03 |      |
| 250  | NH1   | 1    | ▣          | M3     | CIF23C02503PSD5 | CIF23C02503NSD5      | 600x400x250          | D5LAU01                            | 125x285     | 20105079        | DM3CU12                     | DM2CU13 |      |
| 400  | NH2   | 2    | ▣          | M21    | CIF22C04003PSD2 | CIF22C04003NSD2      | 800x600x260          | D5LAU01                            | 485x125     | 20105079        | DM3CU22 <sup>*(4)</sup>     | DM2CU23 |      |
| 630  | NH3   | 3    | ▣          | M21    | CIF22C06303PSD3 | CIF22C06303NSD3      | 1000x600x260         | D5LAU01                            | 485x125     | 20105079        | DM3CU32 <sup>*(4)</sup>     | DM2CU33 |      |
| 800  | NH3   |      | ▣          | M21    | CIF22C08003PSD3 | CIF22C08003NSD3      | 1000x600x260         | D5LAU01                            | 485x125     | 20105079        | DM3CU32 <sup>*(4)</sup>     | DM2CU33 |      |

<sup>\*(1)</sup> Neutral pole early make & late break. Also available (M3) 4P & 3P+DN / (M21)- 4P & 3P+FN under request.

<sup>\*(2)</sup> To be used as signaling or control contacts – I<sub>e</sub> = 0.1A at 125 VAC and 0.1A at 30 VDC (resistive loads) (M3) / I<sub>e</sub> = 16A (resistive loads) 4A (inductive loads) at 250 Vac (M21). Whilst closing, it closes after the main contacts. Whilst opening, it opens before the main contacts.

<sup>\*(3)</sup> One set for input or output.

<sup>\*(4)</sup> Output.

► CIF SERIES | POLYESTER ENCLOSED | 50 A - 250 A



| Amp. | Fuse  | Size | Connection | Series | 3P              | 3P+N <sup>*(1)</sup> | Enclosure dimensions | Auxiliary contacts <sup>*(2)</sup> | Fixing brackets | Terminal shrouds <sup>*(3)</sup> |         |
|------|-------|------|------------|--------|-----------------|----------------------|----------------------|------------------------------------|-----------------|----------------------------------|---------|
|      |       |      |            |        | Code            | Code                 |                      | 1NO+1NC                            |                 | 3P                               | 3P+N    |
|      |       |      |            |        | Code            | Code                 |                      | Code                               |                 | Code                             | Code    |
| 50   | 14x51 | 00   | ⚡          | M3     | CIF23P00503PBC2 | CIF23P00503NBC2      | 400x300x200          | DM3AUB1                            | 20105085        | -                                | -       |
| 63   | NH000 |      | ⚡          | M3     | CIF23P00633PBD2 | CIF23P00633NBD2      | 400x300x200          | DM3AUB1                            | 20105085        | -                                | -       |
| 100  | 22x58 |      | ⚡          | M3     | CIF23P01003PBC3 | CIF23P01003NBC3      | 400x300x200          | DM3AUB1                            | 20105085        | -                                | -       |
| 100  | NH000 |      | ⚡          | M3     | CIF23P01003PBD3 | CIF23P01003NBD3      | 400x300x200          | DM3AUB1                            | 20105085        | -                                | -       |
| 125  | 22x58 | 0    | ⚡          | M3     | CIF23P01253PTC3 | CIF23P01253NTC3      | 400x400x200          | DM3AUB1                            | 20105085        | DM3CU02                          | DM3CU03 |
| 125  | NH00  |      | ⚡          | M3     | CIF23P01253PTD4 | CIF23P01253NTD4      | 400x400x200          | DM3AUB1                            | 20105085        | DM3CU02                          | DM3CU03 |
| 160  | NH00  |      | ⚡          | M3     | CIF23P01603PTD4 | CIF23P01603NTD4      | 400x400x200          | DM3AUB1                            | 20105085        | DM3CU02                          | DM3CU03 |
| 250  | NH1   | 1    | ⚡          | M3     | CIF23P02503PSD5 | CIF23P02503NSD5      | 600x400x230          | DM3AUB1                            | 20105085        | DM3CU12                          | DM2CU13 |



Telergon, SAU  
Ctra. Castellón – Pol. La Cartuja  
50720 La Cartuja Baja  
Zaragoza, Spain



Tel. +34 976 500 876  
info@telergon.com  
www.telergon.com