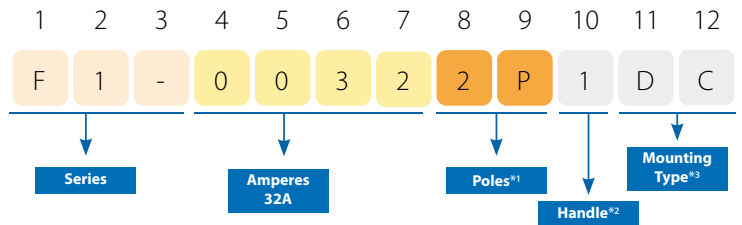


**F1 Series**  
**DC Switch-disconnectors**

▶ PRODUCT BENEFITS

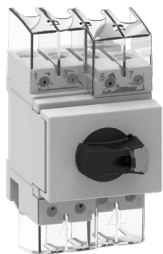
- Lockable at OFF position
- IEC/EN60947.3 standard and AS 60947.3
- IP66 (PM, DC, EA, EP)
- <sup>\*\*</sup> **Handle**: Direct without lock (0), Direct lockable (1), External without lock (2), External lockable black (3), External lockable red-yellow (4)
- <sup>\*\*</sup> **Mounting Type**: DIN-Rail Mounting (DB), Panel Mounting (PM), Door Clutch (DC), Plastic enclosure (EP), Aluminum enclosure (EA).

▶ CODE



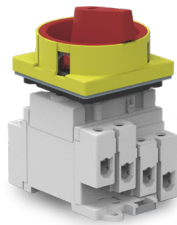
DIN-Rail Mounting

D B



Panel Mounting

P M



Door Interlock

D C



Plastic enclosure

E P



Aluminium enclosure

E A





## TECHNICAL DATA



Data according to IEC/EN60947-3:AS60947.3, GB/T14048.3. Utilization category DC-PV1/DC-PV2.



Main Parameters			
Rated insulation voltage	Ui	V	1500
Rated thermal current	Ith	A	32
Rated impulse withstand voltage	Uimp	V	8000
Rated short-time making capacity	Icw	A	1 kA, 1 S
Maximum cable cross sections (incl. jumper)			
Rigid		mm <sup>2</sup>	4-16
Flexible		mm <sup>2</sup>	4-10
Flexible (+multicore cable end)		mm <sup>2</sup>	4-10
Torque			
Tightening torque terminal screws M4.		Nm	1.2 - 1.8
Tightening torque cover mounting screws ST4.2(304 stainless steel)		Nm	1.5 - 2.0
Tightening torque knob screws M3		Nm	0.5 - 0.7
Torque switch		Nm	0.9 - 1.3
Fixing torque for base mounting		Nm	1.1 - 1.4
General parameters			
Number of operating cycles with load		Cycles	3000
Number of operating cycles without load		Cycles	10000
Number of DC poles			2 or 4
Operation temperature		°C	-40 to +85 °C
Storage temperature		°C	-40 to +85 °C
Pollution degree			3
Overvoltage category			III
IP rating (PM, DC, EA, EP)			IP66
Main Contacts			
Rated thermal current	Ith		32 A
Rated insulation voltage	Ui		1500 V
Distance of contacts (per pole)			8 mm
Rated operational current Ie (DC-PV1 / DC-PV2)		DC-PV1	DC-PV2
4 layers, only 2 layers in series, with two loads <u>1</u> / <u>2</u> / —	300V	32A	32 A
	600V	32A	32 A
	800V	32A	16 A
	1000V	16A	9 A
	1200V	13A	9 A
4 layers, 4 layers in series, with one load <u>1</u> / <u>2</u> / <u>3</u> / <u>4</u> / —	300V	32A	32 A
	600V	32A	32 A
	800V	32A	32 A
	1000V	32A	32 A
	1200V	32A	32 A

## ▶ POLES AND SWITCHING CONFIGURATIONS\*1

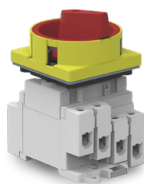
Type	2P	4P	4B	4T	4S
Contacts Wiring graph					
Schematic diagram					





## ▶ DIN-RAIL MOUNTING (DB)



		 lockable	
Amp	Poles	Code	Code
32	2P	F1-00322P1DB	DF1CUA1
32	4P	F1-00324P1DB	
32	4B	F1-00324B1DB	
32	4T	F1-00324T1DB	
32	4S	F1-00324S1DB	

## ▶ PANEL MOUNTING (PM)




		 lockable (red/yellow)	 lockable (black)	 without lock (black)	
Amp	Poles	Code	Code	Code	Code
32	2P	F1-00322P4PM	F1-00322P3PM	F1-00322P2PM	DF1CUA1
32	4P	F1-00324P4PM	F1-00324P3PM	F1-00324P2PM	
32	4B	F1-00324B4PM	F1-00324B3PM	F1-00324B2PM	
32	4T	F1-00324T4PM	F1-00324T3PM	F1-00324T2PM	
32	4S	F1-00324S4PM	F1-00324S3PM	F1-00324S2PM	



► **DOOR INTERLOCK (DC)**



		 lockable (red/yellow)	 lockable (black)	 without lock (black)	 Code
Amp	Poles	Code	Code	Code	DF1CUA1
32	2P	F1-00322P4DC	F1-00322P3DC	F1-00322P2DC	
32	4P	F1-00324P4DC	F1-00324P3DC	F1-00324P2DC	
32	4B	F1-00324B4DC	F1-00324B3DC	F1-00324B2DC	
32	4T	F1-00324T4DC	F1-00324T3DC	F1-00324T2DC	
32	4S	F1-00324S4DC	F1-00324S3DC	F1-00324S2DC	

► **PLASTIC ENCLOSURE (EP)**



		Black handle	Emergency handle
Amp	Poles	Code	Code
32	2P	F1-00322P3EP	F1-00322P4EP
32	4P	F1-00324P3EP	F1-00324P4EP
32	4B	F1-00324B3EP	F1-00324B4EP
32	4T	F1-00324T3EP	F1-00324T4EP
32	4S	F1-00324S3EP	F1-00324S4EP

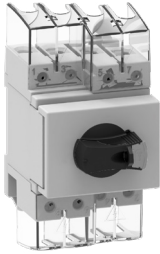
► **ALUMINIUM ENCLOSURE (EA)**



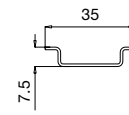
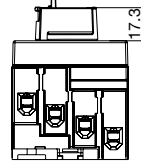
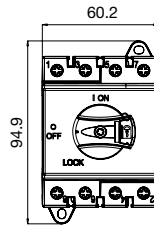
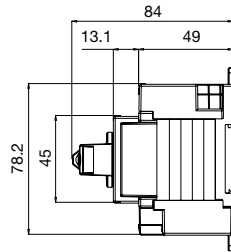
		Black handle	Emergency handle
Amp	Poles	Code	Code
32	2P	F1-00322P3EA	F1-00322P4EA
32	4P	F1-00324P3EA	F1-00324P4EA
32	4B	F1-00324B3EA	F1-00324B4EA
32	4T	F1-00324T3EA	F1-00324T4EA
32	4S	F1-00324S3EA	F1-00324S4EA

## ► DIMENSIONS

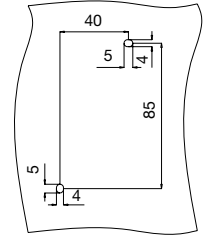
### DIN MOUNTING (DB)



Lockable



Switch bottom guide  
rail installation size

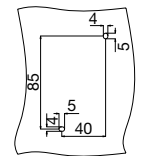
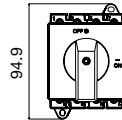
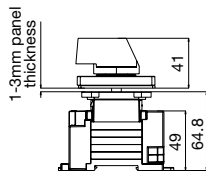


Screw installation size

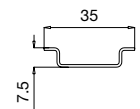
### PANEL MOUNTING (PM)



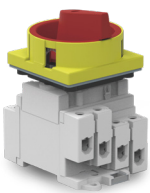
Without lock



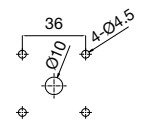
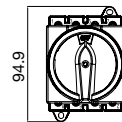
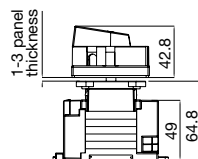
Screw installation size



Switch bottom guide  
rail installation size



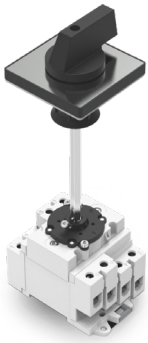
Lockable



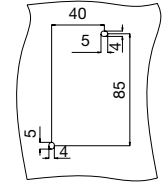
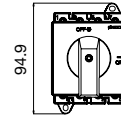
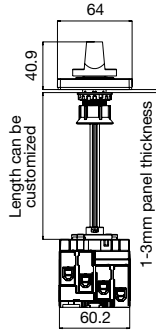
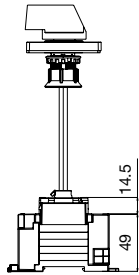
Head panel installation size

## ► DIMENSIONS

### DOOR INTERLOCK (DC)



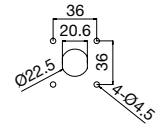
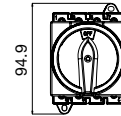
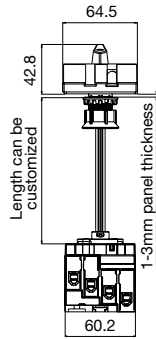
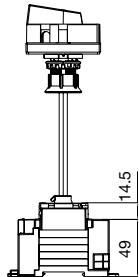
Without lock



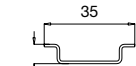
Screw installation size



Lockable



Head panel installation size

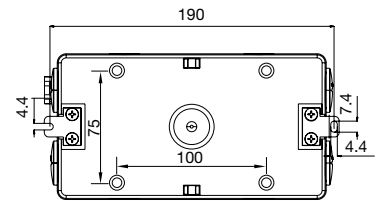
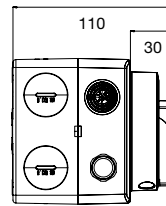
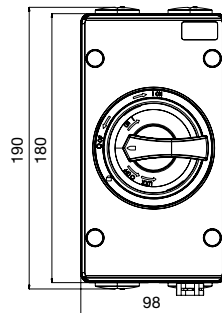


Switch bottom guide rail installation size

### PLASTIC & ALUMINIUM ENCLOSED



Plastic



Aluminium

